



River Thames BOW CREEK / RIVER LEA (MIDDLE)

DEPTHS in METRES

Scale 1: 1250 at A1

Surveyed by the Port of London Authority
Hydrographic Service

June 2017

DEPTHS
Depths are in metres, reduced to Chart Datum, being 3.35m below Ordnance Datum (Newlyn), which is approximately the level of Lowest Astronomical Tide.

DEEPEST WATER
The line of deepest water is indicated by a pecked line running the length of the creek.

SOUNDINGS
All sub-5m dry areas are surveyed by MBES giving 100% coverage to IHO S44 order 1A

POSITIONS
Positions are referred to the Ordnance Survey of Great Britain (1936) Datum.

HEIGHTS
Heights are in metres. Underlined figures are drying heights above Chart Datum; all other heights are above MHWS.

BRIDGES - HEADWAY above MHWS
Old Railway Bridge = 5.0m
Dock Road Foot Bridge = 6.2m
Canning Town Road Bridge A13 = 4.9m *see insert.
Barge Dock Foot Bridge = 9.7m
Ailsa Wharf Bridge = 5.2m

LIGHTS ON JETTIES
Light stars without legends represent two fixed lights displayed vertically. They are seen as red to port and green to starboard when proceeding upriver.

TOPOGRAPHY
The shore features on this chart are based largely on Ordnance Survey digital map data with the permission of the Controller of Her Majesty's Stationery Office. © Crown copyright.

LADDERS
Useable ladders allowing access to/from the river at certain states of the tide are shown thus

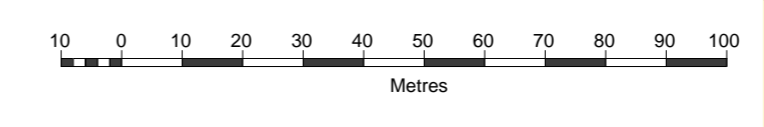
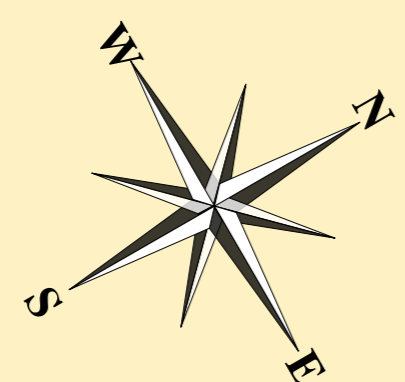
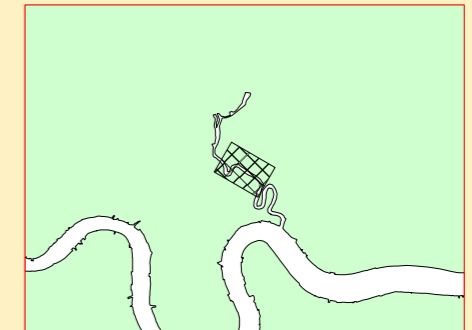
PLA REFERENCES
The numbers shown on the shore and in parentheses in the river adjacent to moorings refer to PLA licences.

PLA PUBLICATIONS
Refer to PLA Publications for further information:
1. PLA River Byelaws
2. General Directions for Navigation
3. PLA Tide Tables & Port Information
4. The River Thames Recreational Users Guide
5. Mariner's Guide to Bridges on the Tidal Thames

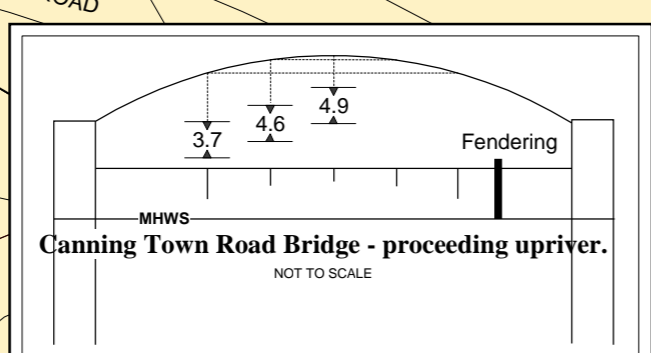
PLA HYDROGRAPHIC SERVICE WEBSITE
www.pla.co.uk/hydrohomepage



Tide Details, referred to levels at West India Dock Entrance:	Ordnance Datum	Chart Datum
Highest Recorded (1953)	5.25	8.60
Highest Astronomic Tide	4.40	7.75
Mean High Water Springs	3.87	7.22
Mean High Water	3.25	6.60
Mean High Water Neaps	2.62	5.97
Ordnance Datum (Newlyn)	-----	3.35
Mean Low Water Neaps	-1.74	1.61
Mean Low Water Springs	-2.72	0.63
Chart Datum	-3.35	-----
Lowest Recorded Low Water (1987)	-4.03	-0.68



Port of London Hydrographic Service
H.O.Ref. No...113-378-020B...Date...21/08/2017



Limit of PLA Navigational Jurisdiction