



PORT OF LONDON  
AUTHORITY

Port of London Authority  
Chart Correction Advice  
Date: 12th Dec 2014

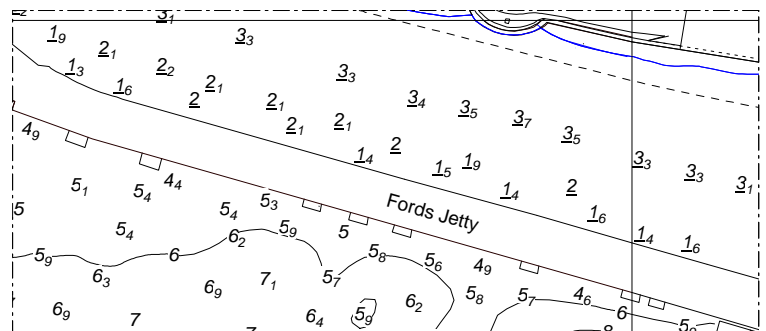
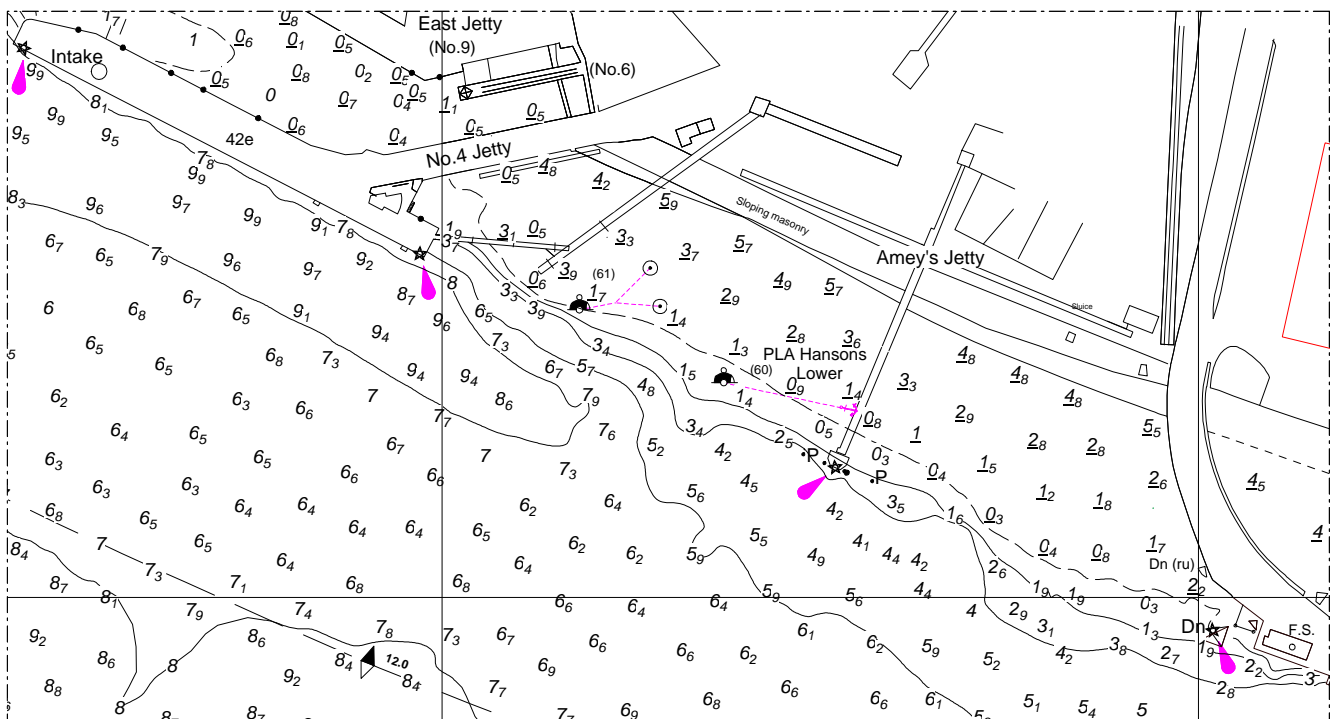


**CCA No: 2014/39**

Chart: Halfway Reach

PLA Chart No. 327  
HO Ref No. 113-327-190  
Previous Chart Correction: none

The accompanying block corrections show revised depths and contours following recent part surveys off Dagenam No.4, Amey's and Fords jetties. Also a new anchor mooring installed between Hanson No.4 and Amey's Jetty. This mooring is marked by an unlit Admiralty mooring buoy, numbered (60) and named "PLA Hansons Lower".



For further information see the PLA hydrographic service website: [www.pla.co.uk/hydrohomepage](http://www.pla.co.uk/hydrohomepage)