



PORT OF LONDON
AUTHORITY

Port of London Authority
Chart Correction Advice
Date: 4th November 2016

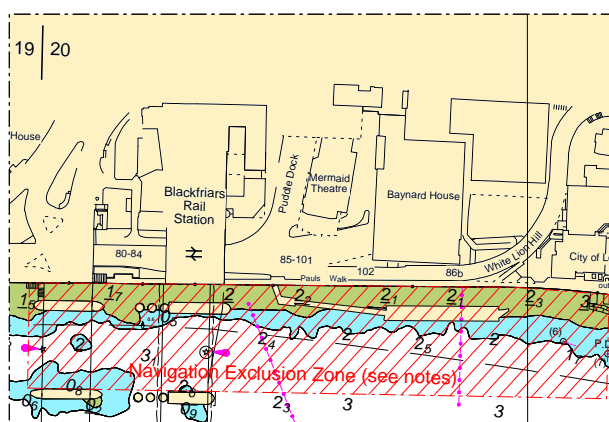


CCA No: 2016/31

Chart: Kings Reach

PLA Chart No. 317
HO Ref No. 113-317-130
Previous Chart Correction: 2016/19

The accompanying block correction shows that a new pier has been built off the north bank just downriver of Blackfriars Rail Bridge.



For further information see the PLA hydrographic service website:

<http://www.pla.co.uk/Safety/PLA-Hydrographic-Service-Published-Surveys>