



PORT OF LONDON
AUTHORITY

Port of London Authority
Chart Correction Advice
Date: 29th February 2016

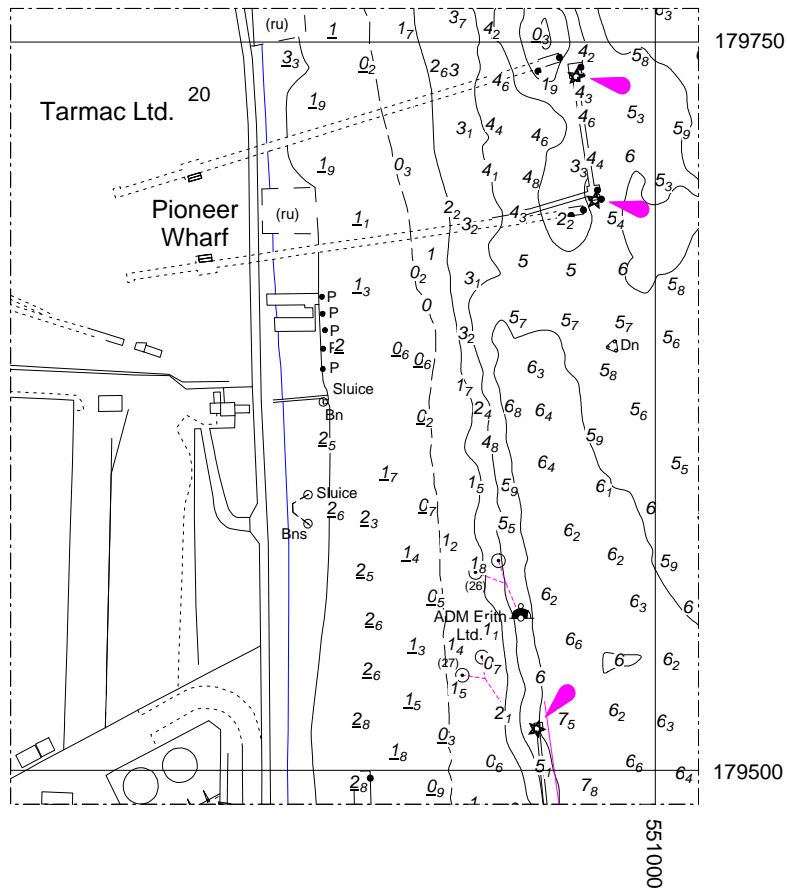


CCA No: 2016/7

Chart: Erith Reach

PLA Chart No. 329
HO Ref No. 113-329-118
Previous Chart Correction: 2015/13

The accompanying block correction shows that the jetty and dolphins at Calendar Wharf ("BICC - Erith") have been removed.



For further information see the PLA hydrographic service website:

<http://www.pla.co.uk/Safety/PLA-Hydrographic-Service-Published-Surveys>