



PORT OF LONDON
AUTHORITY

Port of London Authority
Chart Correction Advice
Date 19th May, 2017

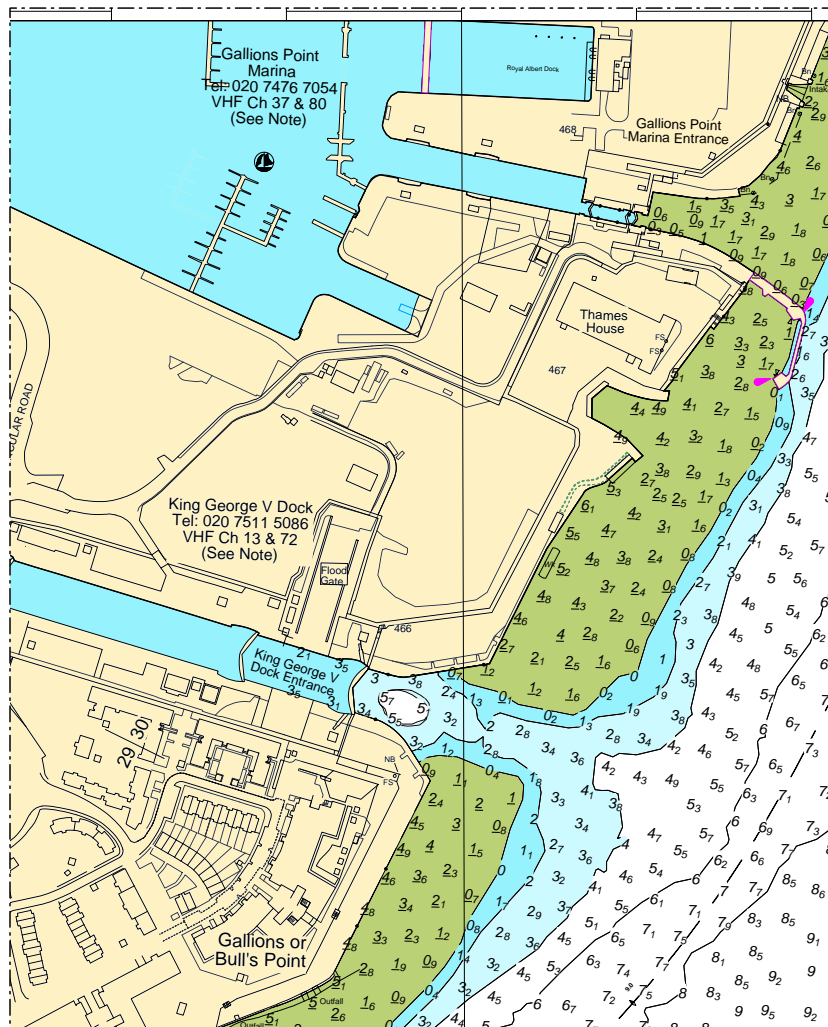


CCA No: 2017/13

Chart: Woolwich Reach (Lower)

PLA Chart No. 324
HO Ref No. 113-324-085
Previous Chart Correction: 2017/9

The accompanying block correction shows:
Revised Topography around Gallions Marina & KGV Entrance



For further information see the PLA hydrographic service website:

<http://www.pla.co.uk/Safety/PLA-Hydrographic-Service-Published-Surveys>