



PORT OF LONDON
AUTHORITY

Port of London Authority
Chart Correction Advice
Date: 21st July 2017

CCA No: 2017/20

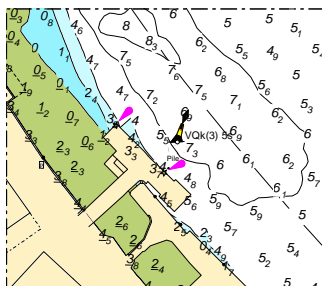


Chart:Limehouse. Reach

PLA Chart No. 320
HO Ref No. 113-320-059
Previous Chart Correction: 2016/16

The accompanying block correction shows

New, temporary Easterly Cardinal Mark located off Convoys Wharf
This warns of a sunken pontoon



For further information see the PLA hydrographic service website:

<http://www.pla.co.uk/Safety/PLA-Hydrographic-Service-Published-Surveys>