



PORT OF LONDON
AUTHORITY

Port of London Authority
Chart Correction Advice
Date: 24th January 2017



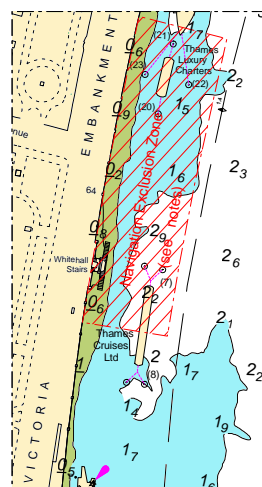
CCA No: 2017/2

Chart: Lambeth Reach

PLA Chart No. 316
HO Ref No. 113-3316-178

Previous Chart Correction: New Edition May 2016

The accompanying block correction shows four screw moorings numbered (7) and (8) on Main Survey chart 316 have been pulled from the river and repositioned.



For further information see the PLA hydrographic service website:

<http://www.pla.co.uk/Safety/PLA-Hydrographic-Service-Published-Surveys>