



PORT OF LONDON
AUTHORITY

Port of London Authority
Chart Correction Advice
Date:13th September, 2017



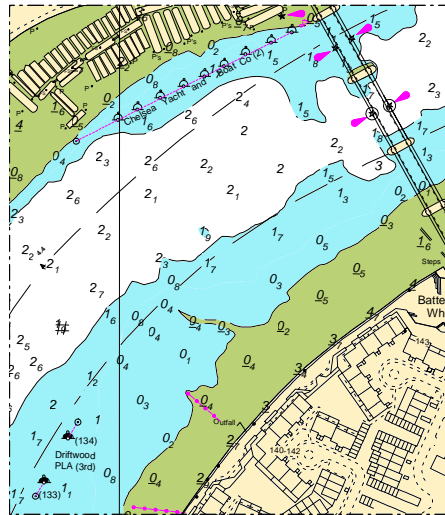
CCA No: 2017/29

Chart: Battersea Reach

PLA Chart No. 314
HO Ref No. 113-314-088
Previous Chart Correction: 2017/15

The accompanying block correction shows:

New soundings & depth areas on and around Battersea Shoal



For further information see the PLA hydrographic service website:

<http://www.pla.co.uk/Safety/PLA-Hydrographic-Service-Published-Surveys>