



Port of London Authority
Chart Correction Advice
Date: 20th October 2017



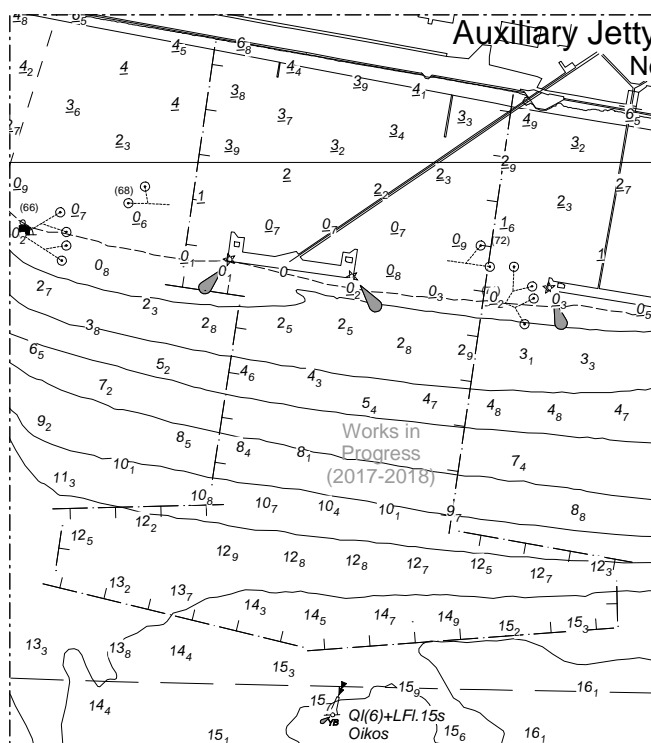
CCA No: 2017/39

Chart: Sea Reach
THAMESHAVEN TO CANVEY ISLAND

PLA Chart No. 341
HO Ref No. 113-341-680
Previous Chart Correction: 2017/38 New Edition

The accompanying block correction shows:

Temporary Sth Cardinal Mark "Oikos" in position $51^{\circ} 30.3409'N$ $000^{\circ} 33.6197'E$
and Cautionary Area around Construction Works for new Oikos No2 Jetty



For further information see the PLA hydrographic service website:

<http://www.pla.co.uk/Safety/PLA-Hydrographic-Service-Published-Surveys>