



PORT OF LONDON
AUTHORITY

Port of London Authority
Chart Correction Advice
Date: 7th November, 2017

CCA No: 2017/41

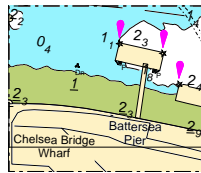


Chart: .Nine Elms Reach

PLA Chart No. 315
HO Ref No. 113-315-050
Previous Chart Correction: 2016/34

The accompanying block correction shows:

New 'Battersea Pier'



For further information see the PLA hydrographic service website:

<http://www.pla.co.uk/Safety/PLA-Hydrographic-Service-Published-Surveys>