



Port of London Authority
Chart Correction Advice
Date: 2nd August, 2018

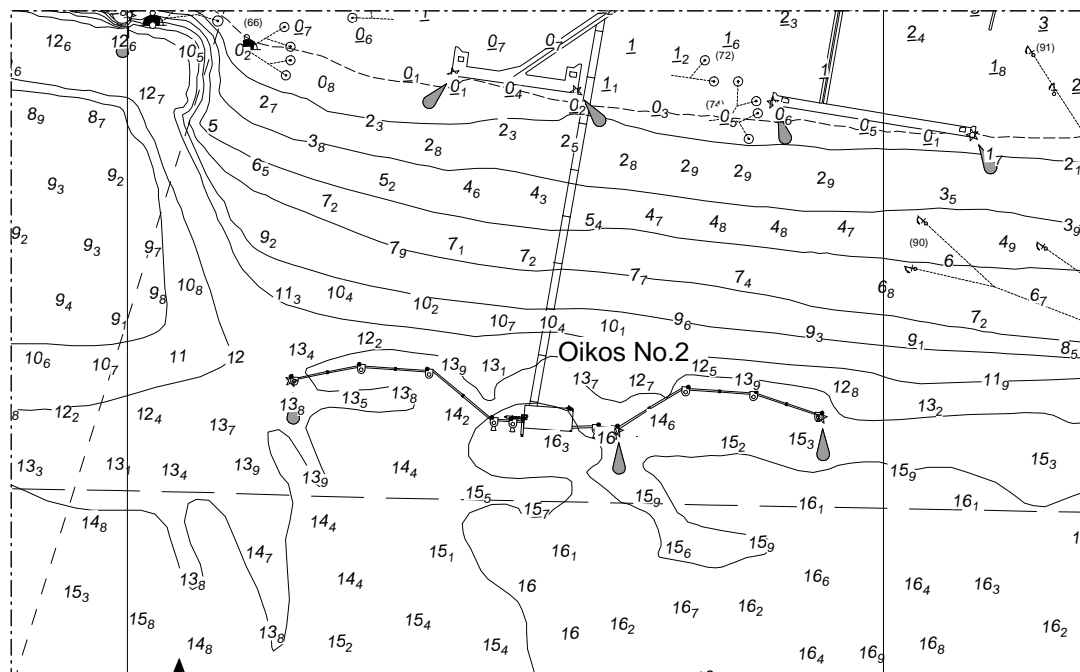


CCA No: 2018/18

Chart: Sea Reach
THAMESHAVEN TO CANVEY ISLAND

PLA Chart No. 341
HO Ref No. 113-341-680
Previous Chart Correction: 2017/39

The accompanying block correction shows:
The removal of a South Cardinal Mark and the newly built Jetty Oikos No.2
with associated depth and contour changes



For further information see the PLA hydrographic service website:

<http://www.pla.co.uk/Safety/PLA-Hydrographic-Service-Published-Surveys>