



Port of London Authority  
Chart Correction Advice  
Date: 2nd August, 2018



**CCA No: 2018/19**

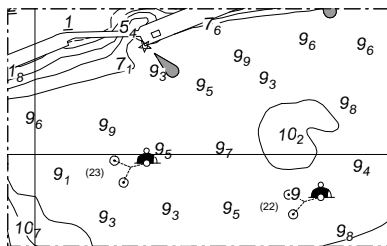
Chart: Sea Reach  
MUCKING FLATS TO THAMESHAVEN  
THAMESHAVEN TO CANVEY ISLAND

PLA Chart No. 340  
HO Ref No. 113-340-215  
Previous Chart Correction: 2017/NE

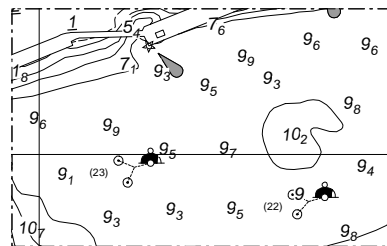
PLA Chart No. 341  
HO Ref No. 113-341-680  
Previous Chart Correction: 2017/39

The accompanying block correction shows:  
New twin-screw Tug Mooring (23) below S-Jetty, off K-Jetty, Thameshaven

340



341



For further information see the PLA hydrographic service website:

<http://www.pla.co.uk/Safety/PLA-Hydrographic-Service-Published-Surveys>