



PORT OF LONDON  
AUTHORITY

Port of London Authority  
Chart Correction Advice  
Date: 11th September, 2018

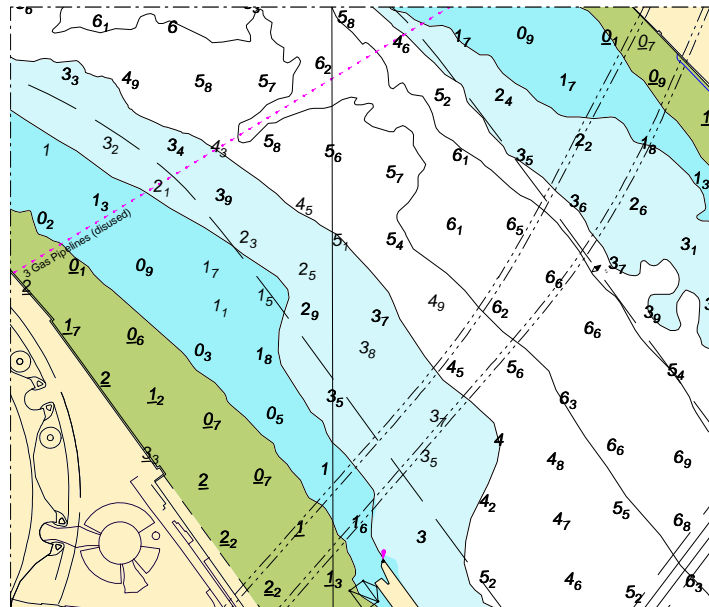


**CCA No: 2018/21**

Chart: Blackwall Reach to Bugsbys Reach

PLA Chart No. 322  
HO Ref No. 113-322-360  
Previous Chart Correction: 2017/35

The accompanying block correction shows:  
Revised Soundings & Contours - Blackwall Point Shoal



For further information see the PLA hydrographic service website:

<http://www.pla.co.uk/Safety/PLA-Hydrographic-Service-Published-Surveys>