



PORT OF LONDON  
AUTHORITY

Port of London Authority  
Chart Correction Advice  
Date:26th January, 2018

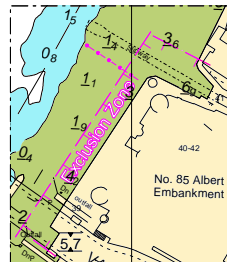
**CCA No: 2018/02**



Chart: Nine Elms Reach

PLA Chart No. 315  
HO Ref No. 113-315-050  
Previous Chart Correction: 2017/45

The accompanying block correction shows:  
The redeposition of the Exclusion Zone off No 85 Albert Embankment  
& revised extent of slipway



For further information see the PLA hydrographic service website:

<http://www.pla.co.uk/Safety/PLA-Hydrographic-Service-Published-Surveys>