



PORT OF LONDON
AUTHORITY

Port of London Authority
Chart Correction Advice
Date: 13th November, 2018

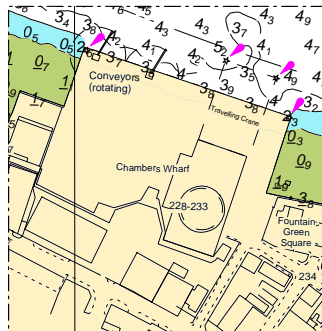


CCA No: 2018/28

Chart: Upper Pool

PLA Chart No. 318
HO Ref No. 113-318-266
Previous Chart Correction: 2018/26

The accompanying block correction shows:
Newly operational Chambers Wharf and associated depths



For further information see the PLA hydrographic service website:

<http://www.pla.co.uk/Safety/PLA-Hydrographic-Service-Published-Surveys>