



PORT OF LONDON
AUTHORITY

Port of London Authority
Chart Correction Advice
Date: 21st March, 2018



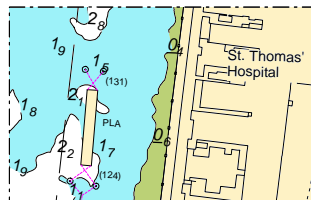
CCA No: 2018/9

Chart: Lambeth Reach

PLA Chart No. 316
HO Ref No. 113-316-178
Previous Chart Correction: 2017/28

The accompanying block correction shows

New Mooring off St Thomas'
Removal of moorings 131, 132 & 133 and
reinstatement of 131 at the lower end of a 50m x 7m barge/pontoon



For further information see the PLA hydrographic service website:

<http://www.pla.co.uk/Safety/PLA-Hydrographic-Service-Published-Surveys>