



PORT OF LONDON
AUTHORITY

Port of London Authority
Chart Correction Advice
Date:23rd April, 2019

CCA No: 2019/12



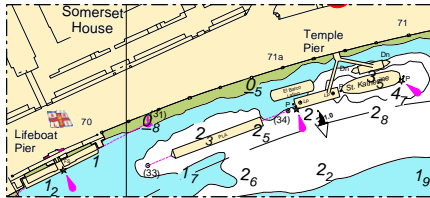
Chart: Battersea to Chelsea Reach
& Nine Elms Reach

PLA Chart No. 316
HO Ref No. 113-316-178
Previous Chart Correction: 2019/3

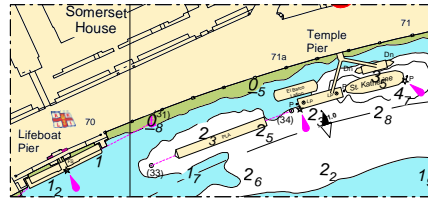
PLA Chart No. 317
HO Ref No. 113-317-130
Previous Chart Correction: 2019/1

The accompanying block correction shows:
Barge (62m x 6m) installed upstream of Temple Pier,
between moorings relocated No33 and existing No34

PLA 316



PLA 317



For further information see the PLA hydrographic service website:

<http://www.pla.co.uk/Safety/PLA-Hydrographic-Service-Published-Surveys>