



PORT OF LONDON
AUTHORITY

Port of London Authority
Chart Correction Advice
Date: 7th January, 2018

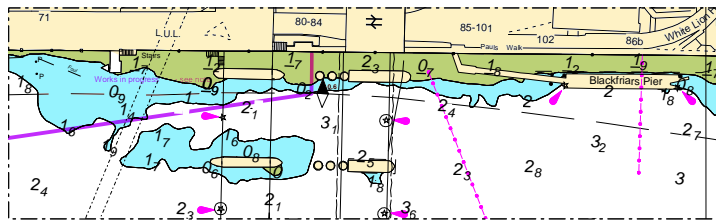


CCA No: 2019/1

Chart: Kings Reach

PLA Chart No. 317
HO Ref No. 113-317-130
Previous Chart Correction: 2018/15

The accompanying block correction shows:
Revised Depths around Blackfriars Bridges (north)



For further information see the PLA hydrographic service website:

<http://www.pla.co.uk/Safety/PLA-Hydrographic-Service-Published-Surveys>