



PORT OF LONDON
AUTHORITY

Port of London Authority
Chart Correction Advice
Date:23rd April, 2019

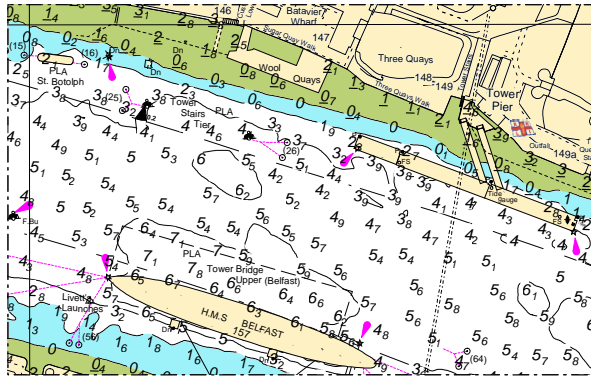
CCA No: 2019/13



Chart: Upper Pool

PLA Chart No. 318
HO Ref No. 113-318-266
Previous Chart Correction: 2018/28

The accompanying block correction shows:
Revised mooring configuration at Tower Stairs Tier (lower)



For further information see the PLA hydrographic service website:

<http://www.pla.co.uk/Safety/PLA-Hydrographic-Service-Published-Surveys>