



PORT OF LONDON
AUTHORITY

Port of London Authority
Chart Correction Advice
Date: 15th August, 2019



CCA No: 2019/26

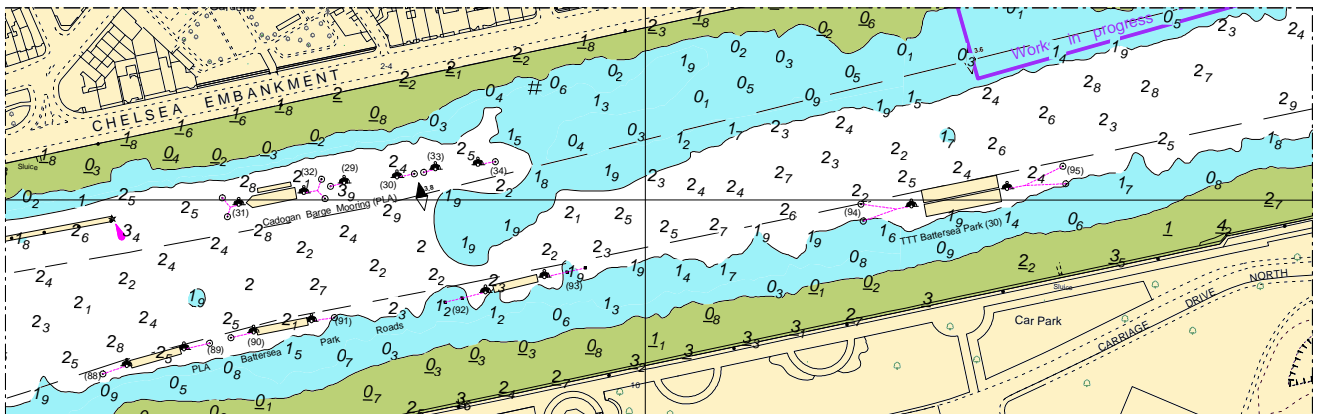
Chart: Battersea Reach

PLA Chart No. 314
HO Ref No. 113-314-088
Previous Chart Correction: 2019/20

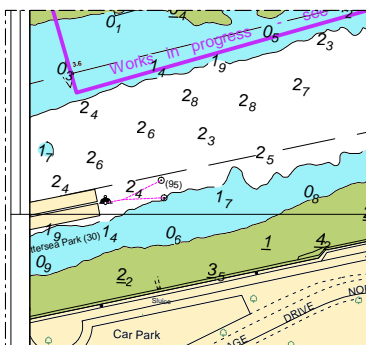
PLA Chart No. 315
HO Ref No. 113-315-050
Previous Chart Correction: 2018/7

The accompanying block correction shows:
Revised moorings south of the Channel.
PLA Driftwood removed & replaced with TTT Battersea Park (30)
PLA Battersea Park Roads moved upstream & added to with two further moorings

PLA 314



PLA 315



For further information see the PLA hydrographic service website:

<http://www.pla.co.uk/Safety/PLA-Hydrographic-Service-Published-Surveys>