



PORT OF LONDON
AUTHORITY

Port of London Authority
Chart Correction Advice
Date: 3rd September, 2019



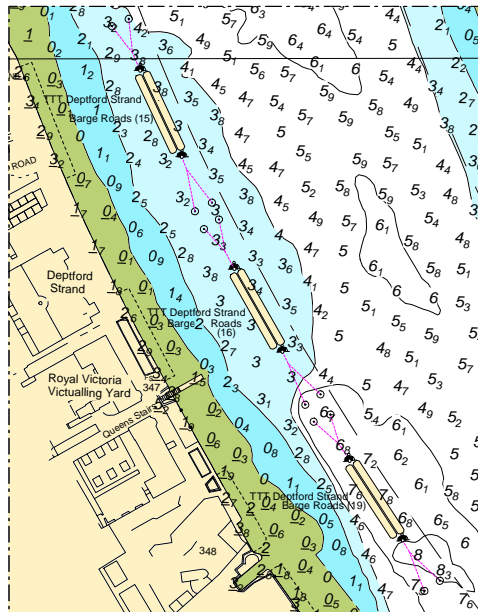
CCA No: 2019/27

Chart: Limehouse Reach to Greenwich Reach

PLA Chart No. 320
HO Ref No. 113-320-059
Previous Chart Correction: 2019/22

The accompanying block correction shows:

New Moorings installed TTT Deptford Strand Roads Nos. 15, 16 & 19



For further information see the PLA hydrographic service website:

<http://www.pla.co.uk/Safety/PLA-Hydrographic-Service-Published-Surveys>