



PORT OF LONDON
AUTHORITY

Port of London Authority
Chart Correction Advice
Date: 27th February, 2019

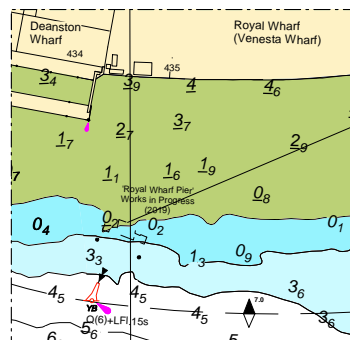


CCA No: 2019/7

Chart: Woolwich Reach (Upper)

PLA Chart No. 323
HO Ref No. 113-323-301
Previous Chart Correction: 2017/35

The accompanying block correction shows:
Works in Progress, piles and S.Cardinal Mark,
post demolition of Gulf Island Jetty, Woolwich Reach, Upper



For further information see the PLA hydrographic service website:

<http://www.pla.co.uk/Safety/PLA-Hydrographic-Service-Published-Surveys>