



PORT OF LONDON  
AUTHORITY

Port of London Authority  
Chart Correction Advice  
Date: 27th February, 2019



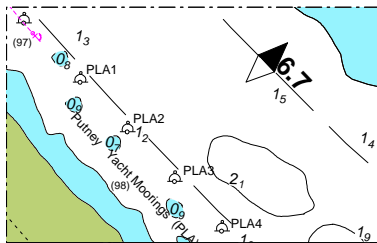
**CCA No: 2019/8**

Chart: Barn Elms Reach (Lower)

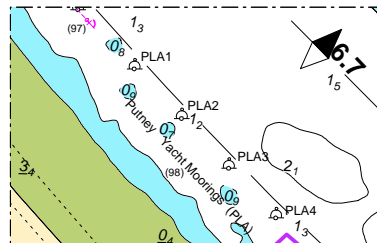
PLA Chart No. 312  
HO Ref No. 113-312-018  
Previous Chart Correction: 2018/14

The accompanying block correction shows:  
Replacement PLA Moorings 1-4 (Putney Yacht Moorings, Putney)

Panel 1



Panel 2



For further information see the PLA hydrographic service website:

<http://www.pla.co.uk/Safety/PLA-Hydrographic-Service-Published-Surveys>