



PORT OF LONDON
AUTHORITY

Port of London Authority
Chart Correction Advice
Date: 10th September, 2020

CCA No: 2020/20



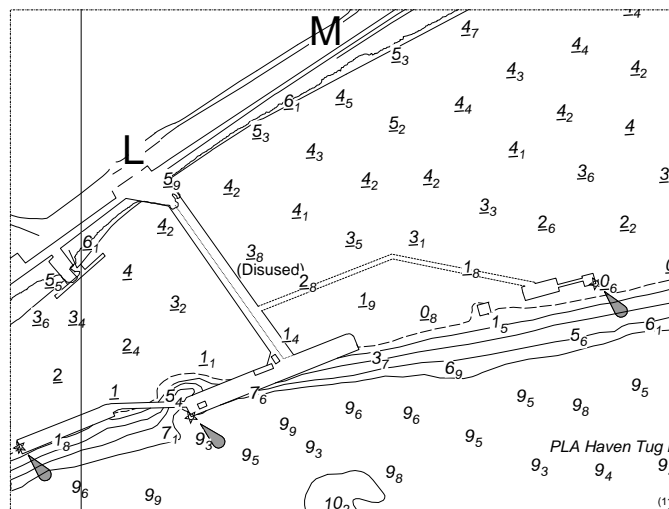
Chart: Mucking Flats & Thameshaven

PLA Chart No. 340.
HO Ref No. 113-340-215
Previous Chart Correction: 2020/17

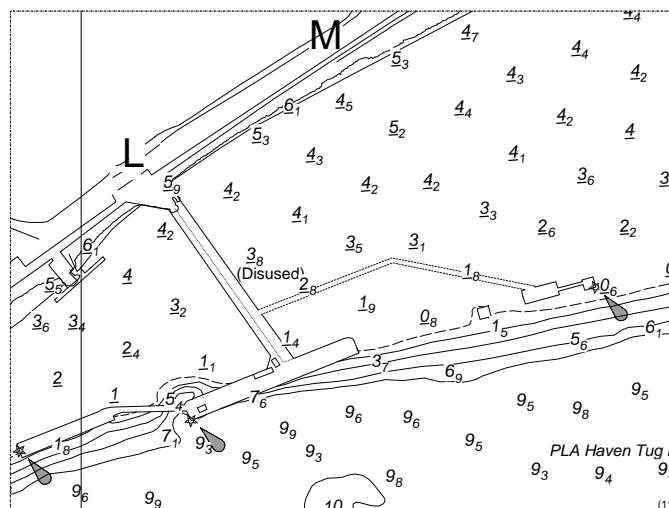
PLA Chart No. 341.
HO Ref No. 113-341-680
Previous Chart Correction: 2020/17

The accompanying block correction shows:
Re-establishment of light on Thameshaven M Jetty

340



341



For further information see the PLA hydrographic service website:

<http://www.pla.co.uk/Safety/PLA-Hydrographic-Service-Published-Surveys>