



PORT OF LONDON  
AUTHORITY

Port of London Authority  
Chart Correction Advice  
Date: 28/09/2020

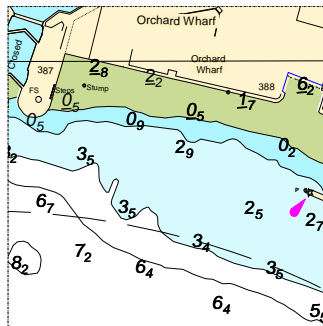
**CCA No: 2020/21**



Chart: Blackwall Reach to Bugsby's Reach

PLA Chart No. 322  
HO Ref No. 113-322-360  
Previous Chart Correction: 2020/19

The accompanying block correction shows:  
Removal of Orchard Wharf Buoy and all associated ground tackle (10)



For further information see the PLA hydrographic service website:

<http://www.pla.co.uk/Safety/PLA-Hydrographic-Service-Published-Surveys>