



PORT OF LONDON  
AUTHORITY

Port of London Authority  
Chart Correction Advice  
Date: 14th July, 2021

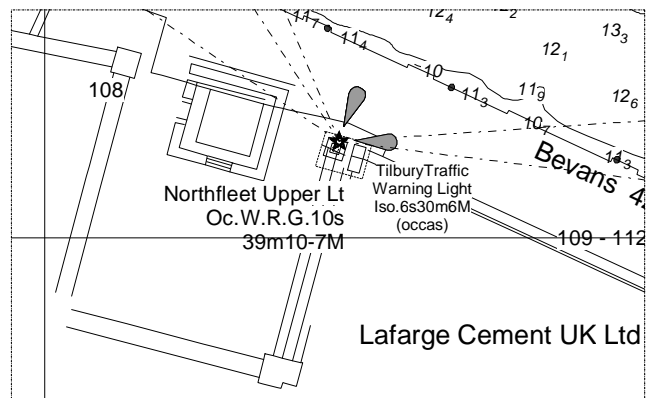
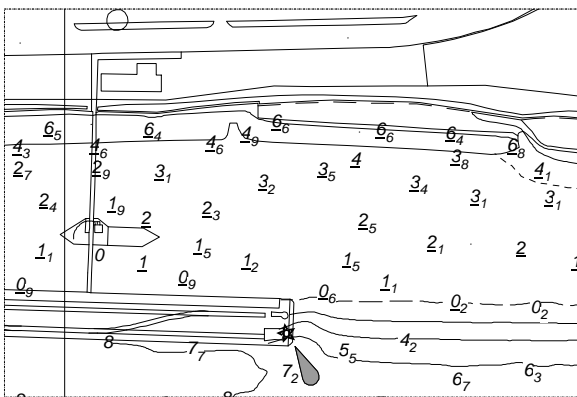
**CCA No: 2021/19**



Gravesend Reach (Upper)

PLA Chart No. 335  
HO Ref No. 113-335-775  
Previous Chart Correction: 2020/24

The accompanying block correction shows:  
The Tilbury Tanker Warning Light has been removed  
from the cargo jetty on the north side of the River and re-located  
on the Northfleet Upper Light tower on the southern shore.



For further information see the PLA hydrographic service website:

<http://www.pla.co.uk/Safety/PLA-Hydrographic-Service-Published-Surveys>