



PORT OF LONDON  
AUTHORITY

# Port of London Authority Chart Correction Advice Date: 26th April, 2022



## CCA No: 2022/4

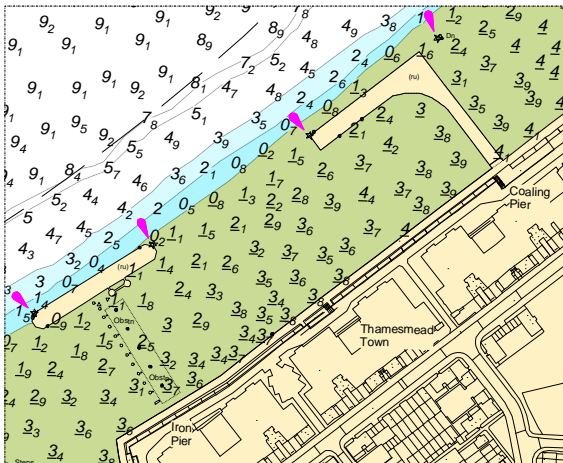
Chart: Woolwich Reach & Gallions Reach

PLA Chart No. 324  
HO Ref No. 113-324-085  
Previous Chart Correction: 2021/12

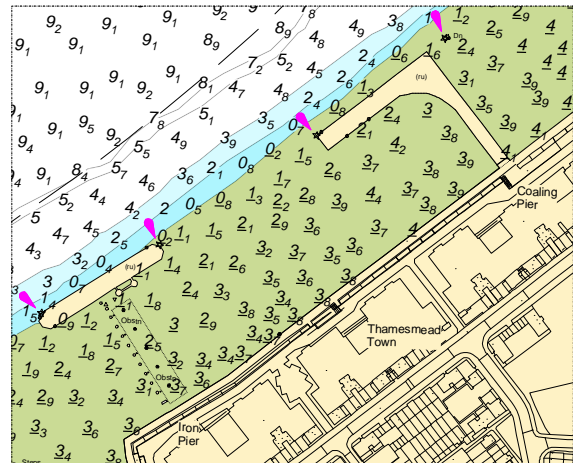
PLA Chart No. 325  
HO Ref No. 113-325-228  
Previous Chart Correction: 2021/12

The accompanying block correction shows:  
Revised names for the two structures previously shown as 'T' Jetty & Iron Pier,  
now Iron Pier & Coaling Pier respectively

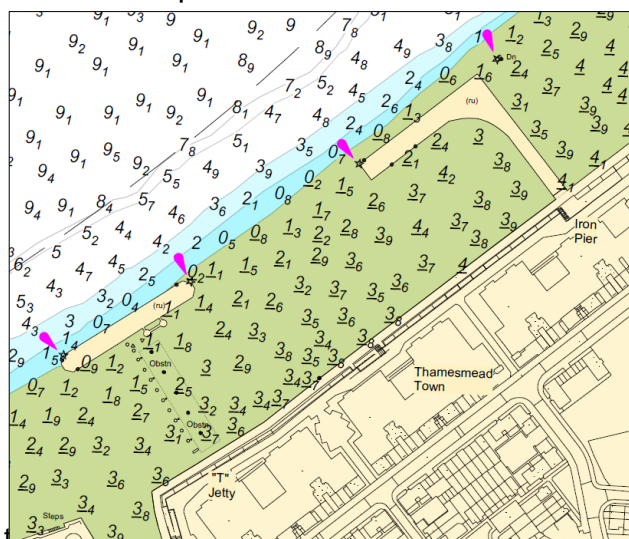
PLA 324



PLA 325



Previous depiction



For further information see the Port of London Authority website:

<http://www.pla.co.uk/Safety/PLA-Hydrographic-Service-Published-Surveys>