



PORT OF LONDON
AUTHORITY

Port of London Authority Chart Correction Advice Date: 25th July 2023



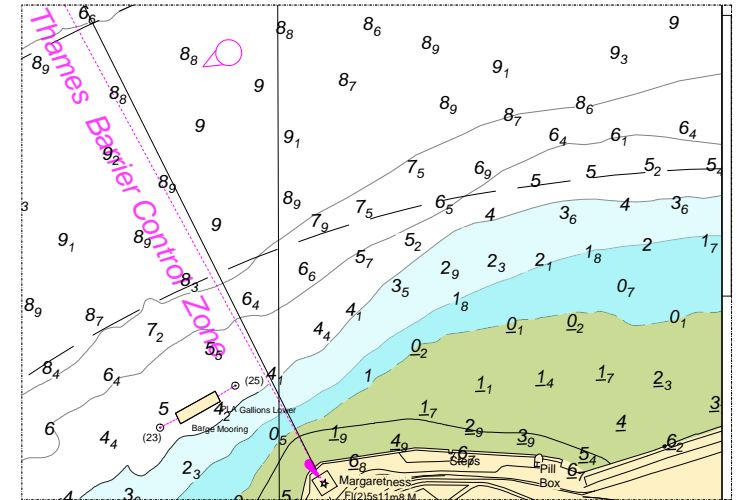
CCA No: 2023/25

Charts: Gallions Reach & Barking Reach

The accompanying block corrections show:
Revised depths & contours
south side of the River at Margaretness

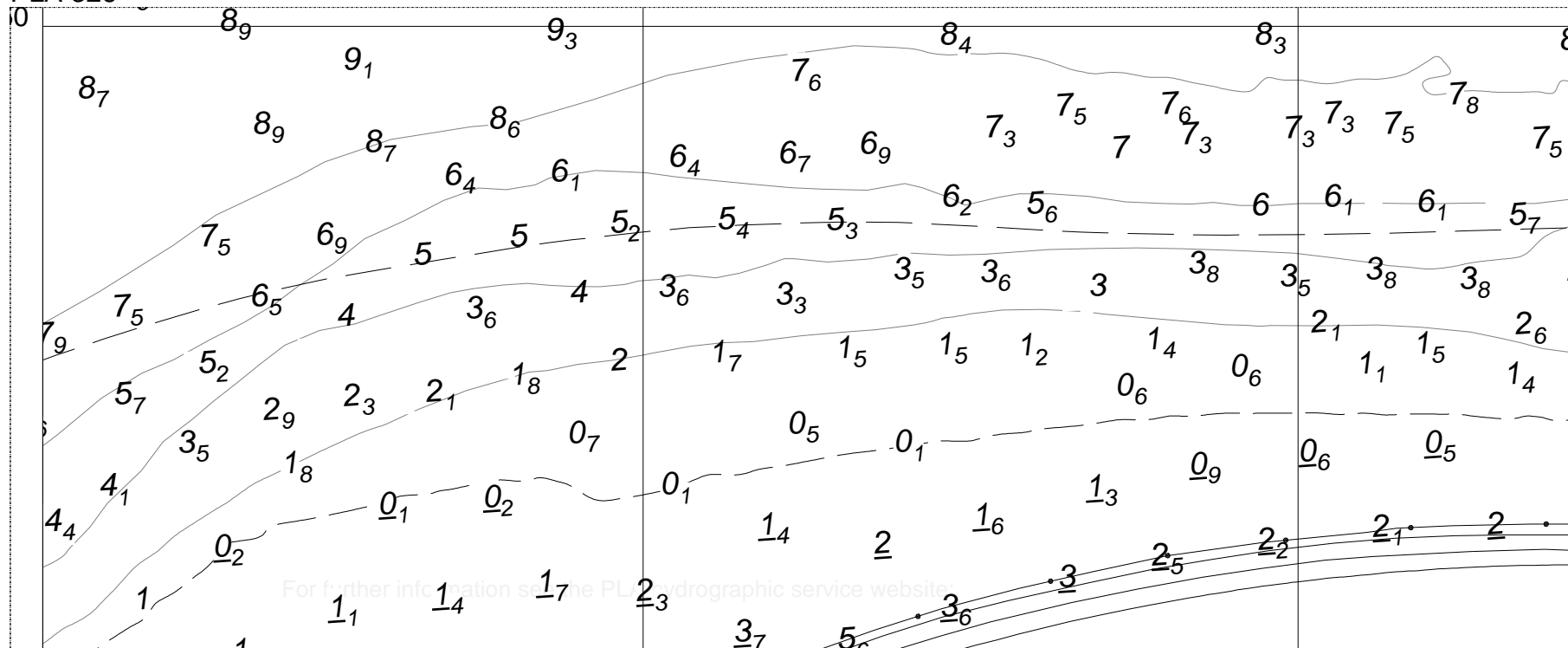
PLA Chart No. 325
HO Ref No. 113-325-312
Previous Chart Correction: NE 2023/01

PLA Chart No. 326
HO Ref No. 113-326-360
Previous Chart Correction: 2023/23



PLA 325

PLA 326



For further information see the PLA Hydrographic service website

HYDROGRAPHIC SERVICE
ISO FORM 425

AUTHOR: John Dillon-Leetch, Port Hydrographer
OWNER: John Dillon-Leetch, Port Hydrographer

Reviewed by: RH
Reviewed Date: 21/12/2022

Issue:01 Date:18/10/13
Page 1 of 1

Document ID: FM 0425
Review Due: Dec 2023

<http://www.pla.co.uk/Safety/PLA-Hydrographic-Service-Published-Surveys>