

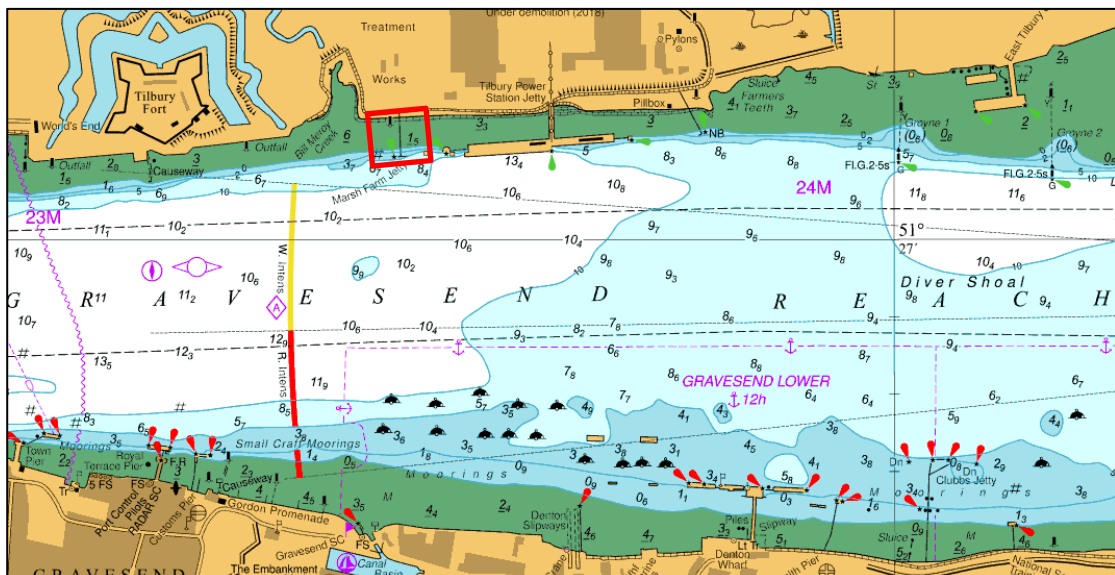
NOTICE TO MARINERS L14 of 2019

GRAVESEND REACH

TILBURY2

MARSH FARM JETTY AND MOORING DOLPHIN REMOVAL

This notice supersedes L13 of 2019



Work to remove the Marsh Farm Jetty and the lower end dolphin of the former Tilbury Power Station Jetty will commence the week beginning 22nd April as part of the TILBURY2 development.

A 75m spud leg barge will be utilised for the removal of the structures along with a transfer barge and the multi-cat vessel, SEADOG.

Scaffolding will be rigged on the structures to assist with removal and lifting.

Lifting operations will be carried out as required during which time London VTS will broadcast a 'Proceed with Caution' on VHF Channel 68.

All vessels involved with the works will maintain a continuous listening watch on VHF Channel 68. At times International Code flags "Romeo Yankee" will be exhibited in conjunction with a "Proceed with Caution" being broadcast by London VTS.

Removal works are expected to last for approximately 6 weeks.

For the latest information contact London VTS on VHF Channel 68 or by telephone on 01474 560311.

10 April 2019

Port of London Authority
London River House, Royal Pier Road,
Gravesend, Kent DA12 2BG

BOB BAKER
CHIEF HARBOUR MASTER



EXPIRY DATE: 30th June 2019
TO RECEIVE FUTURE NOTICES TO MARINERS BY **E-MAIL**,
PLEASE REGISTER VIA OUR WEBSITE www.pla.co.uk
**Telephone calls, VHF radio traffic, CCTV and radar traffic images may
be recorded in the VTS Centres at Gravesend and Woolwich**
All Current Notices to Mariners can be found here -
<http://www.pla.co.uk/Safety/Regulations-and-Guidance/Notices-to-Mariners/Notices-to-Mariners>

