

NOTICE TO MARINERS L15 of 2016

BARROW DEEP and OAZE DEEP **BRADGLEN & WINKFIELD WRECKS** **EXCAVATION WORKS**

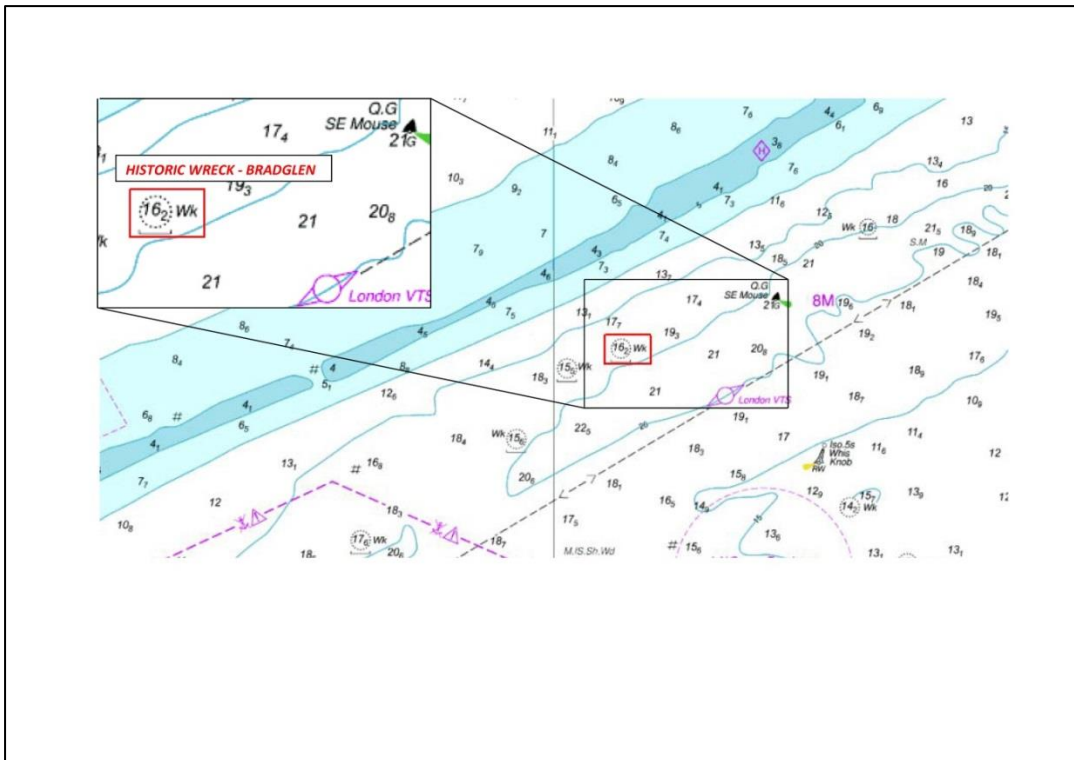
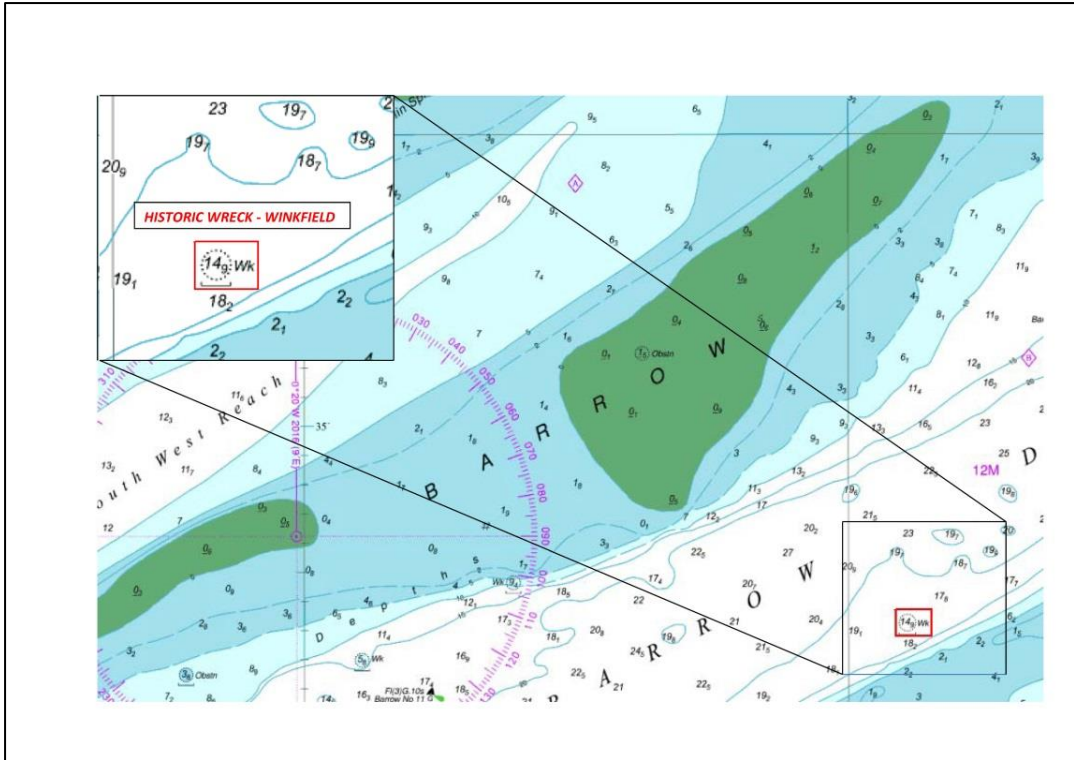
Mariners are advised that the vessel BELA will be moored over the wrecks of the BRADGLEN and WINKFIELD to carryout excavation works commencing on or about Wednesday 26th October 2016 for approximately 20 days.

Over the course of the works, the BELA will moor over the wrecks in the approximate positions as shown on the attached chartlet.

The vessel will display lights and shapes in accordance with the International Regulations for Preventing Collisions at Sea 1972 (as amended) Rule 27 b. The vessel will maintain a listening watch on VHF Channel 68 and 69 throughout the working period. All vessels are required to reduce speed and proceed with caution whilst passing this location when work is underway and at all times when advised by London VTS.

Details of operations will be included on the regular London VTS River broadcast on VHF Channel 68 and 69.

For the latest information contact London VTS on VHF Channel 68 and 69 or by telephone on 01474 560311.



20 October 2016

Port of London Authority
 London River House, Royal Pier Road,
 Gravesend, Kent DA12 2BG

BOB BAKER
 CHIEF HARBOUR MASTER



Expiry Date: 1st December 2016
 TO RECEIVE FUTURE NOTICES TO MARINERS BY **E-MAIL**,
 PLEASE REGISTER VIA OUR WEBSITE www.pla.co.uk
**Telephone calls, VHF radio traffic, CCTV and radar traffic images may
 be recorded in the VTS Centres at Gravesend and Woolwich**

