

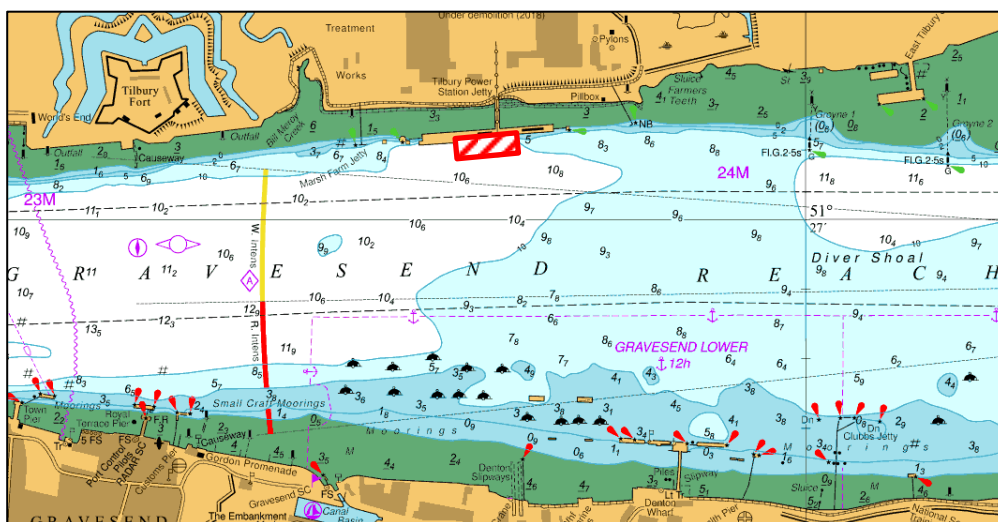
NOTICE TO MARINERS L17 of 2019

GRAVESEND REACH

TILBURY2

SHEET WALL PILING & LIFTING OPERATIONS

This notice supersedes L10 of 2019



Further works on the Tilbury 2 development will commence on the week beginning the 18th March 2019 and will consist of 325m of sheet wall being piled. This will form a new retaining wall as part of the new CMAT berth on the downstream end of the former Tilbury Power Station berth.

The piles will be driven into the river bed utilising a 75m flat top barge equipped with a 320T crawler crane to assist with lifting operations. A second flat top barge will be utilised to assist in the storage of materials adjacent to the crane barge. All barge movements will be carried out by the multi-cat vessel SEADOG. A safety boat will also be in attendance.

All vessels involved with the works will maintain a continuous listening watch on VHF Channel 68. At times International Code flags "Romeo Yankee" will be exhibited in conjunction with a "Proceed with Caution" being broadcast by London VTS.

Works are expected to last until **late May 2019**.

For the latest information contact London VTS on VHF Channel 68 or by telephone on 01474 560311.

30 April 2019

Port of London Authority
London River House, Royal Pier Road,
Gravesend, Kent DA12 2BG

BOB BAKER
CHIEF HARBOUR MASTER



TO RECEIVE FUTURE NOTICES TO MARINERS BY **E-MAIL**,
PLEASE REGISTER VIA OUR WEBSITE www.pla.co.uk
Telephone calls, VHF radio traffic, CCTV and radar traffic images may
be recorded in the VTS Centres at Gravesend and Woolwich
All Current Notices to Mariners can be found here -
<http://www.pla.co.uk/Safety/Regulations-and-Guidance/Notices-to-Mariners/Notices-to-Mariners>

