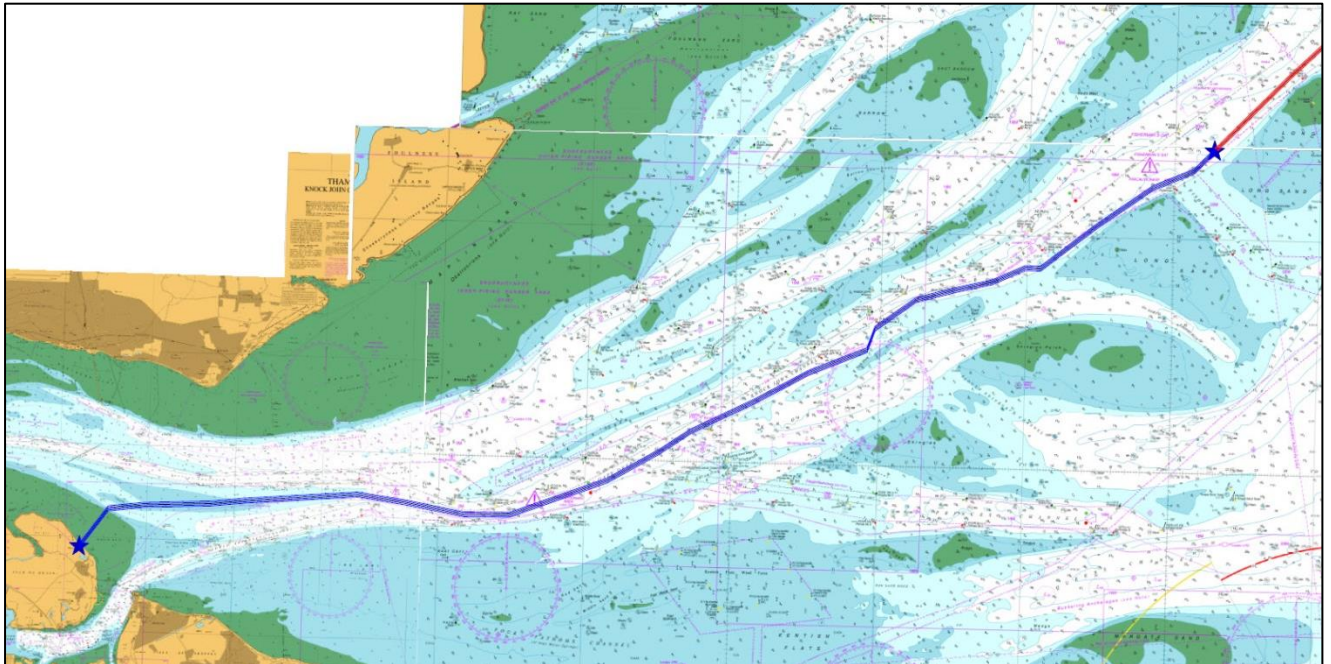


NOTICE TO MARINERS L18 of 2018

THAMES ESTUARY UNDERWATER SURVEY UK to Germany NeuConnect Interconnector Cable

Underwater surveys and grab sampling will be undertaken along the proposed route of the NeuConnect electricity cable running between the Isle of Grain and Wilhelmshaven in Germany.



Works will be carried out by the vessels SEIONT A and SEREN LAS. The vessel details are as follows:

SEIONT A	SEREN LAS
LOA: 17 m, beam 5.1 m Call Sign: MWHL MMSI: 235001428	LOA: 10m, beam 3.5m Call Sign: MDAH2 MMSI: 235087047

Surveys are expected to commence on Monday 17th September 2018, and should be completed by 15th October 2018, but may be extended as a result of prolonged periods of unsuitable weather. This notice will be cancelled on completion of the surveys.

When carrying out surveys both vessels will be restricted in their ability to manoeuvre and will display lights and shapes in accordance with the International Regulations for Preventing Collisions at Sea 1972 (as amended) Rule 27 b. The vessels will maintain a listening watch on VHF CH 69 throughout the working period.

All vessels are required to proceed with caution past these vessels when work is underway and at all times when advised by London VTS.

For the latest information contact London VTS on VHF Channel 68 and 69 or by telephone on 01474 560311.

**14th September
2018**

Port of London Authority
London River House, Royal Pier Road,
Gravesend, Kent DA12 2BG

**BOB BAKER
CHIEF HARBOUR MASTER**



TO RECEIVE FUTURE NOTICES TO MARINERS BY **E-MAIL**,
PLEASE REGISTER VIA OUR WEBSITE www.pla.co.uk
Telephone calls, VHF radio traffic, CCTV and radar traffic images may
be recorded in the VTS Centres at Gravesend and Woolwich



PORT OF LONDON
AUTHORITY