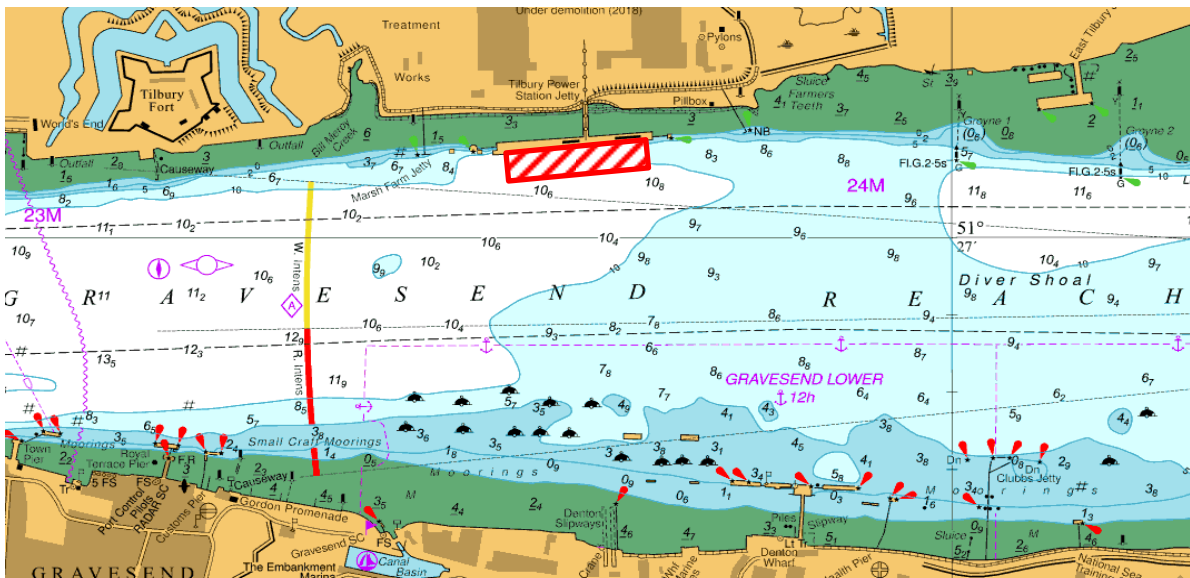


NOTICE TO MARINERS L18 of 2019

GRAVESEND REACH

TILBURY2

TUBULAR PILE INSTALLATION



Further works on the Tilbury 2 development will commence early May 2019 and will consist of 89 Tubular piles installations split into 3 main areas CMAT, RORO plus the Linkspan restraint piles.

The Tubular piles will be driven into the river bed utilising NEPTUNE a 75m flat top barge NP385 equipped with a 320T crawler crane to assist with lifting operations. A second 250T Crawler crane will be utilised on the existing jetty with two transfer & storage barges NP429 & NP488. All barge movements will be carried out by the multi-cat vessel SEADOG. A safety boat EOL 1 will also be in attendance.

All vessels involved with the works will maintain a continuous listening watch on VHF Channel 68. At times International Code flags "Romeo Yankee" will be exhibited in conjunction with a "Proceed with Caution" being broadcast by London VTS.

Works are expected to last until Mid Oct 2019.

For the latest information contact London VTS on VHF Channel 68 or by telephone on 01474 560311.

3 May 2019

Port of London Authority
London River House, Royal Pier Road,
Gravesend, Kent DA12 2BG

BOB BAKER
CHIEF HARBOUR MASTER



EXPIRY DATE: 23rd October 2019
TO RECEIVE FUTURE NOTICES TO MARINERS BY **E-MAIL**,
PLEASE REGISTER VIA OUR WEBSITE www.pla.co.uk
Telephone calls, VHF radio traffic, CCTV and radar traffic images may
be recorded in the VTS Centres at Gravesend and Woolwich
All Current Notices to Mariners can be found here -
<http://www.pla.co.uk/Safety/Regulations-and-Guidance/Notices-to-Mariners/Notices-to-Mariners>

