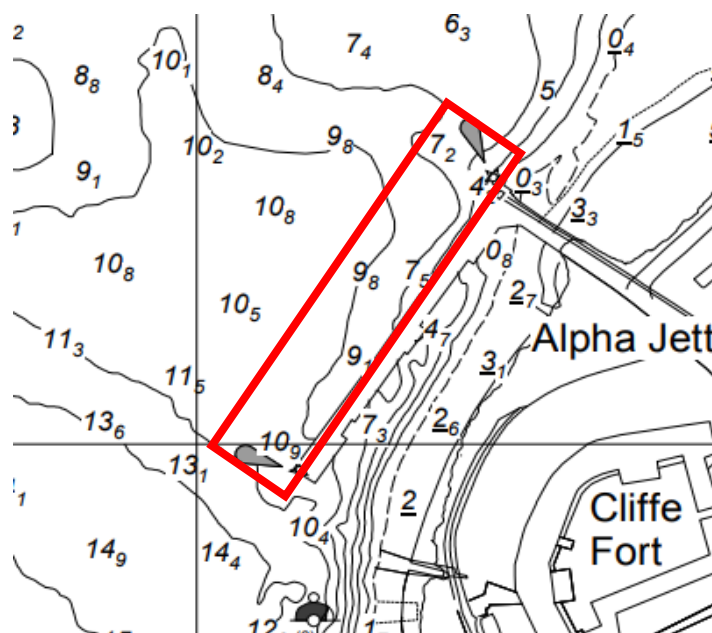


NOTICE TO MARINERS L19 of 2020

LOWER HOPE REACH ALPHA JETTY DREDGING OPERATIONS

On or about 15th November 2020, contractors working on behalf of Brett Aggregates will commence dredging operations to remove spoil material and obstructions at Alpha Jetty, Cliffe. It is anticipated that these operations will take three days to complete. The chartlet below depicts the location and marine footprint of the works:



The Dredger 'WYRE SANDS' will display the lights and shapes as prescribed in Rule 27 of the International Regulations for Preventing Collisions at Sea 1972 namely:

- By day, three black shapes in a vertical line the highest and lowest of which are balls and the middle one a diamond.
- By night, three all round lights in a vertical line the highest and lowest of which are red and the middle one white.

Further details will be broadcast by London VTS on VHF Channel 68.

**13th November
2020**

Port of London Authority
London River House, Royal Pier Road,
Gravesend, Kent DA12 2BG

**Miles Featherstone
Deputy Harbour Master**



EXPIRY DATE: 23rd November 2020
TO RECEIVE FUTURE NOTICES TO MARINERS BY **E-MAIL**,
PLEASE REGISTER VIA OUR WEBSITE www.pla.co.uk
Telephone calls, VHF radio traffic, CCTV and radar traffic images may
be recorded in the VTS Centres at Gravesend and Woolwich
All Current Notices to Mariners can be found here -
<http://www.pla.co.uk/Safety/Regulations-and-Guidance/Notices-to-Mariners/Notices-to-Mariners>

