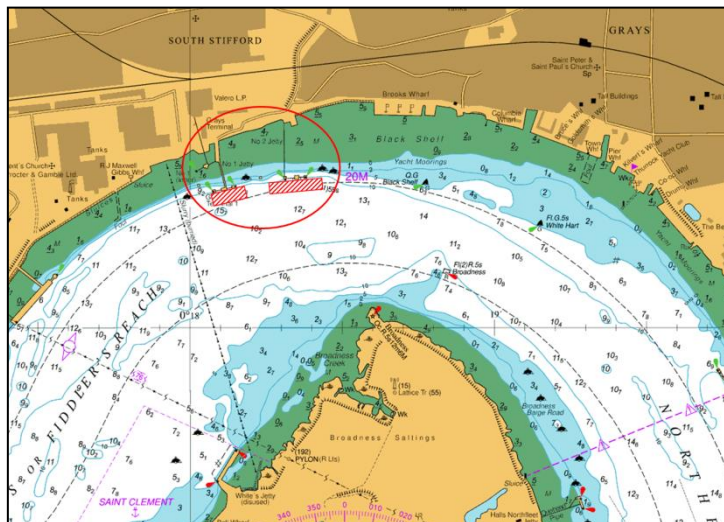


## NOTICE TO MARINERS L1 of 2018

### ST CLEMENTS REACH GRAYS TERMINAL JETTY WORKS

Mariners are advised that work, which includes piling and construction, will commence on GRAYS TERMINAL NO. 2 JETTY on or around the week commencing 8<sup>th</sup> January 2018. At the same time work is being carried out to wooden timbers on Jetty No. 1. Works are expected to last for approximately four months.



The work will be carried out from the spudleg barge HAVEN SEAFORTH and the WILLCARRY 1750 Barge flat top pontoon.

The tug HORTON or MOLLY G will be in attendance and will maintain a continuous listening watch on VHF Channel 68. At times, RY flags will be exhibited in conjunction with a "proceed with caution" included on the VTS Routine Broadcasts.

For the latest information contact London VTS on VHF Channel 68 or by telephone on 01474 560311.

3 January 2018

Port of London Authority  
London River House, Royal Pier Road,  
Gravesend, Kent DA12 2BG

BOB BAKER  
CHIEF HARBOUR MASTER



EXPIRY DATE: 30<sup>th</sup> April 2018  
TO RECEIVE FUTURE NOTICES TO MARINERS BY **E-MAIL**,  
PLEASE REGISTER VIA OUR WEBSITE [www.pla.co.uk](http://www.pla.co.uk)  
**Telephone calls, VHF radio traffic, CCTV and radar traffic images may  
be recorded in the VTS Centres at Gravesend and Woolwich**

