

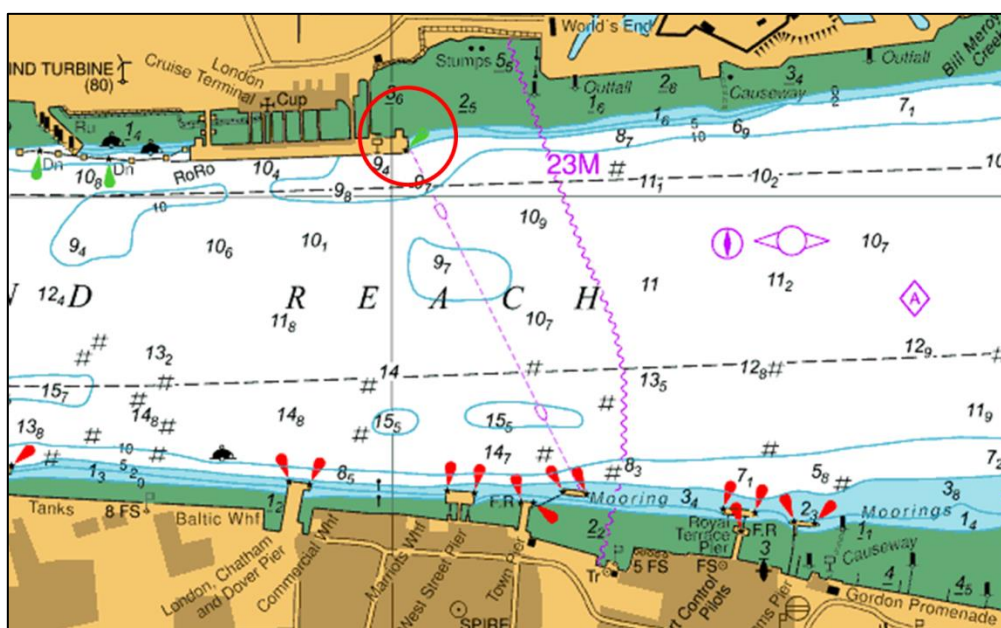
NOTICE TO MARINERS L1 of 2019

GRAVESEND REACH

DOLPHIN REPLACEMENT WORKS

TILBURY LANDING STAGE

Starting on 8th January 2019 works will commence on the replacement of the inner dolphin on the downstream end of the Tilbury Landing Stage.



The works will be carried out from the jackup barge COMMANDER which will be positioned on the end of the stage. The works will see the removal of the current structure and replacement with a new dolphin structure. The works involve lifting and piling operations.

A safety boat will be in attendance throughout the works.

All vessels involved with the works will maintain a continuous listening watch on VHF Channel 68. At times International Code flags "Romeo Yankee" will be exhibited in conjunction with a "Proceed with Caution" being broadcast by London VTS.

For the latest information contact London VTS on VHF Channel 68 or by telephone on 01474 560311.

7th January 2019

Port of London Authority
London River House, Royal Pier Road,
Gravesend, Kent DA12 2BG

BOB BAKER
CHIEF HARBOUR MASTER



TO RECEIVE FUTURE NOTICES TO MARINERS BY E-MAIL,
PLEASE REGISTER VIA OUR WEBSITE www.pla.co.uk
Telephone calls, VHF radio traffic, CCTV and radar traffic images may
be recorded in the VTS Centres at Gravesend and Woolwich
All Current Notices to Mariners can be found here -
<http://www.pla.co.uk/Safety/Regulations-and-Guidance/Notices-to-Mariners/Notices-to-Mariners>

