

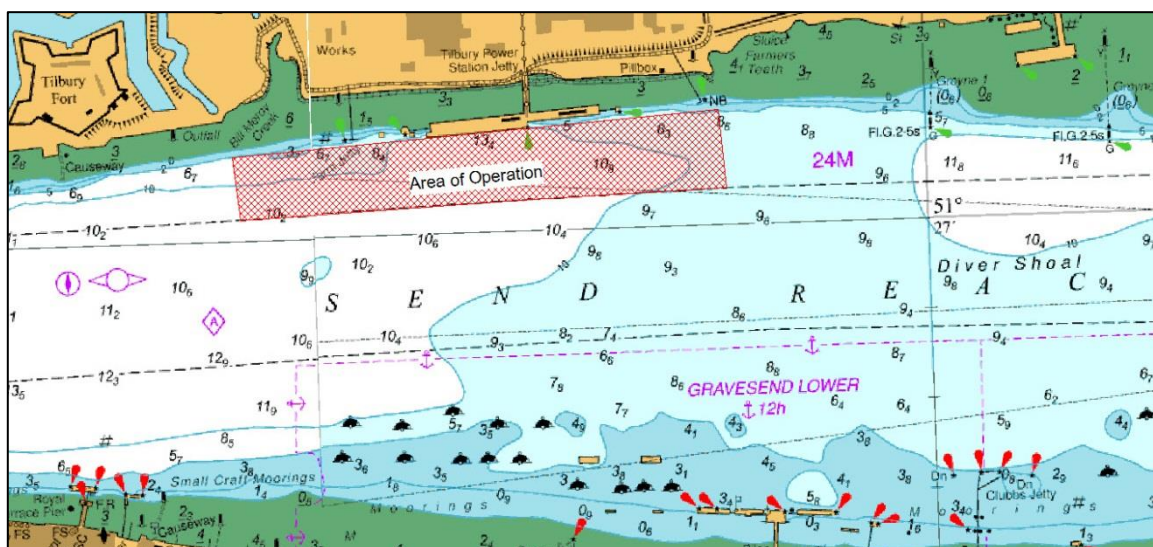
NOTICE TO MARINERS L20 of 2019

GRAVESEND REACH

TILBURY2

MARINE WORKS

This notice supersedes L18 and L17 of 2019



Numerous marine works are underway as part of the TILBURY2 development. Current activities and activities due to commence shortly are summarised below. This notice will be superseded as new works commence or if there are changes to the works noted below.

PILING WORKS (*Underway and due for completion in October 2019*)

Piling works continue for the creation of 8 new berthing dolphins totalling 40 tubular piles on the downriver end of the former Tilbury Power Station. 7 new berthing dolphins totalling 35 tubular piles are also being installed up river of the jetty to create two new RoRo berths. Two additional restraining piles are also being installed for the RoRo pontoon.

Marine Plant involved in these operations includes the 75m flat top barge NEPTUNE equipped with a 320T crawler crane and two transfer & storage barges. All barge movements will be carried out by the multi-cat vessel SEADOG, with the safety boat EOL1 in attendance.

WATER INJECTION DREDGING (*Due to commence on 18th May 2019*)

From Saturday 18th May 2019 the water-injection dredger MAASMOND will commence dredging operations for the new upriver RoRo and CMAT berth boxes. Water-injection dredging will take place over 14 low tide periods.

TRAILER HOPPER SUCTION DREDGING (*Due to commence on 7th June 2019*)

Starting on or around 7th June the trailing suction hopper dredger SHOREWAY will commence further dredging operations. These will run 24 hrs per day, 7 days per week for approximately 2 weeks, with the vessel spending approximately 1 to 3 hours dredging the RoRo and CMAT berth boxes followed by a period of transit to the approved disposal site outside port limits before returning to repeat the process.

GENERAL INFORMATION

Dredgers will display the lights and shapes required by the collision regulations and operate within the marked 'Area of Operation' shown above.

Movements of dredgers and other marine plant can be obtained from London VTS on VHF Channel 68.

At times International Code flags "Romeo Yankee" will be exhibited by the vessels involved in conjunction with a "Proceed with Caution" being broadcast by London VTS.

All vessels involved with the works will maintain a continuous listening watch on VHF Channel 68.

For the latest information contact London VTS on VHF Channel 68 or by telephone on 01474 560311.

17 May 2019

Port of London Authority
London River House, Royal Pier Road,
Gravesend, Kent DA12 2BG

BOB BAKER
CHIEF HARBOUR MASTER



TO RECEIVE FUTURE NOTICES TO MARINERS BY **E-MAIL**,
PLEASE REGISTER VIA OUR WEBSITE www.pla.co.uk
**Telephone calls, VHF radio traffic, CCTV and radar traffic images may
be recorded in the VTS Centres at Gravesend and Woolwich**
All Current Notices to Mariners can be found here -
<http://www.pla.co.uk/Safety/Regulations-and-Guidance/Notices-to-Mariners/Notices-to-Mariners>

