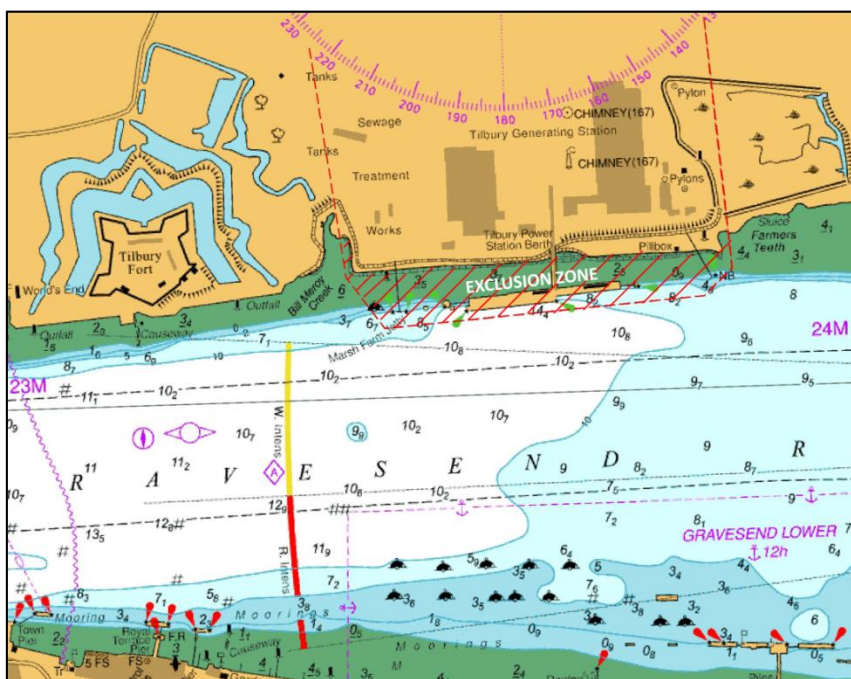


NOTICE TO MARINERS L22 of 2017

GRAVESEND REACH CHIMNEY DEMOLITION EXCLUSION ZONE

Mariners are advised that from 7.00am on Thursday 28th September 2017 an exclusion zone will be established in front of the Tilbury Power Station for the demolition of the two chimneys. The exclusion zone will extend 20m in front of the Tilbury Power Station Jetty as shown below.



Local traffic control will be put in place by a Harbour Service Launch, displaying blue flashing lights, call sign prefix 'THAMES PATROL' and monitoring VHF Channel 68. Local marine police units will be in attendance as well.

The exclusion zone is expected to be lifted at 8.15am subject to the all clear signal being given by the demolition team on site. No vessel will be allowed to enter the exclusion zone at any time between 7am and the all clear signal being given.

For the latest information contact London VTS on VHF Channel 68 or by telephone on 01474 560311.

**25 September
2017**

Port of London Authority
London River House, Royal Pier Road,
Gravesend, Kent DA12 2BG

**BOB BAKER
CHIEF HARBOUR MASTER**



EXPIRY DATE: 29th September 2017
TO RECEIVE FUTURE NOTICES TO MARINERS BY **E-MAIL**,
PLEASE REGISTER VIA OUR WEBSITE www.pla.co.uk
**Telephone calls, VHF radio traffic, CCTV and radar traffic images may
be recorded in the VTS Centres at Gravesend and Woolwich**

