

NOTICE TO MARINERS L23 of 2018

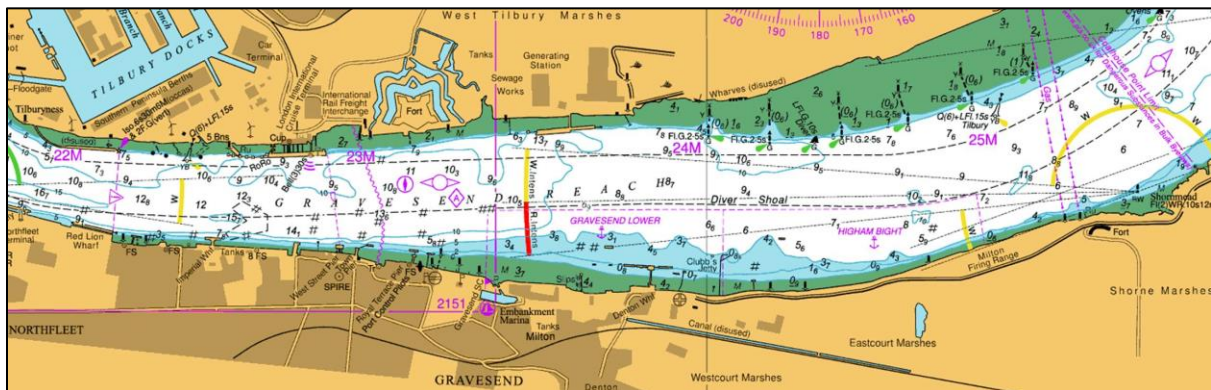
GRAVESEND REACH BELUGA WHALE

This notice supersedes L20 of 2018, which is hereby cancelled.

Due to the ongoing presence of a beluga whale, which is an IUCN red listed species, any vessels which are not required to operate in this area are advised to keep well clear.

Vessels which need to operate in this area are required to keep a close lookout at all times. If the whale is sighted it should not be approached, speed should be reduced, and where possible a minimum distance of 100m from the whale should be maintained.

Further information on marine protected species can be found on the Joint Nature Conservation Council's website.



For the latest navigation information contact London VTS on VHF Channel 68 or by telephone on 01474 560311.

Additional information on the whale can be found at <http://pla.co.uk/BDMLR-and-PLA-joint-press-statement>.

**10th October
2018**

Port of London Authority
London River House, Royal Pier Road,
Gravesend, Kent DA12 2BG

**BOB BAKER
CHIEF HARBOUR MASTER**



TO RECEIVE FUTURE NOTICES TO MARINERS BY **E-MAIL**,
PLEASE REGISTER VIA OUR WEBSITE www.pla.co.uk
Telephone calls, VHF radio traffic, CCTV and radar traffic images may
be recorded in the VTS Centres at Gravesend and Woolwich

