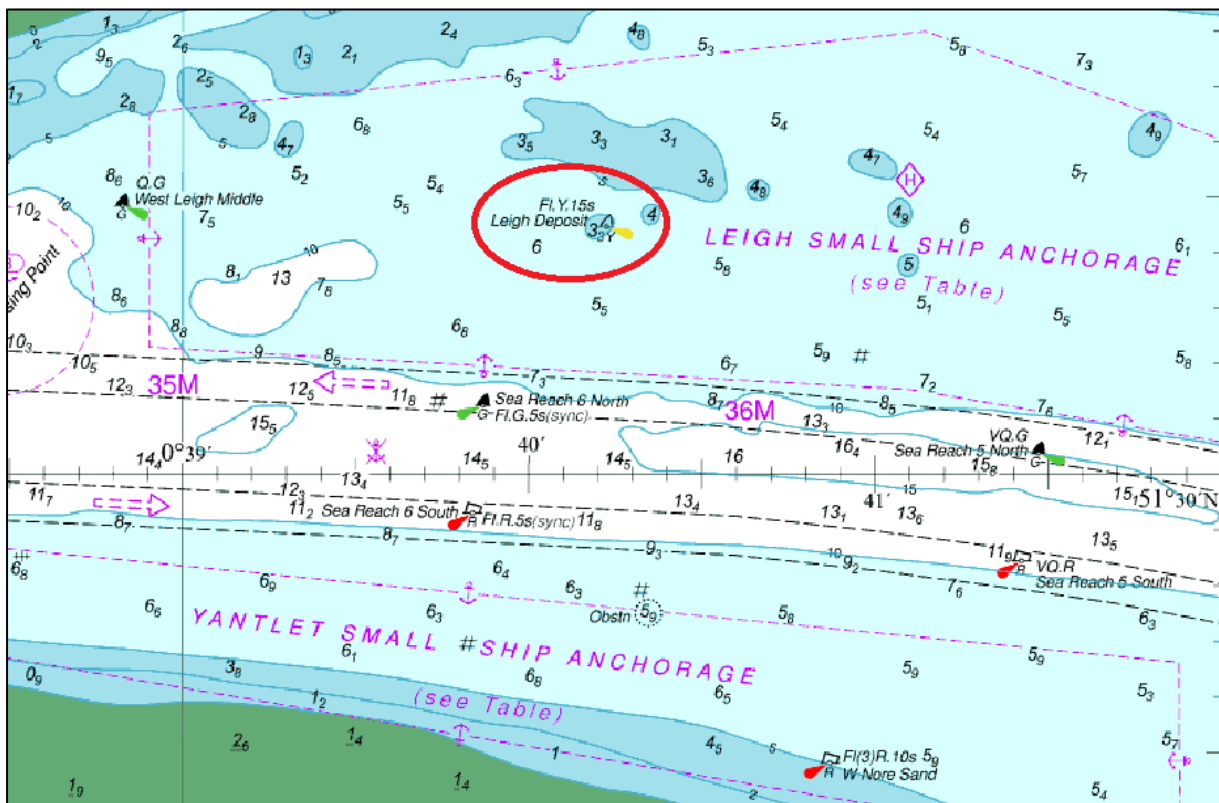


NOTICE TO MARINERS L30 of 2019

SEA REACH LEIGH DEPOSIT BUOY OFF STATION

Notice is hereby given that the Leigh Deposit Buoy, charted position 51°30.268"N 0°40.134"E, light characteristic Fl.Y.15s (highlighted in the chartlet below), is off station until further notice.

Mariners will be advised via a further Notice once the Buoy has been reinstated.



31 July 2019

Port of London Authority
London River House, Royal Pier Road,
Gravesend, Kent DA12 2BG

BOB BAKER
CHIEF HARBOUR MASTER



TO RECEIVE FUTURE NOTICES TO MARINERS BY **E-MAIL**,
PLEASE REGISTER VIA OUR WEBSITE www.pla.co.uk
Telephone calls, VHF radio traffic, CCTV and radar traffic images may
be recorded in the VTS Centres at Gravesend and Woolwich
All Current Notices to Mariners can be found here -
<http://www.pla.co.uk/Safety/Regulations-and-Guidance/Notices-to-Mariners/Notices-to-Mariners>

