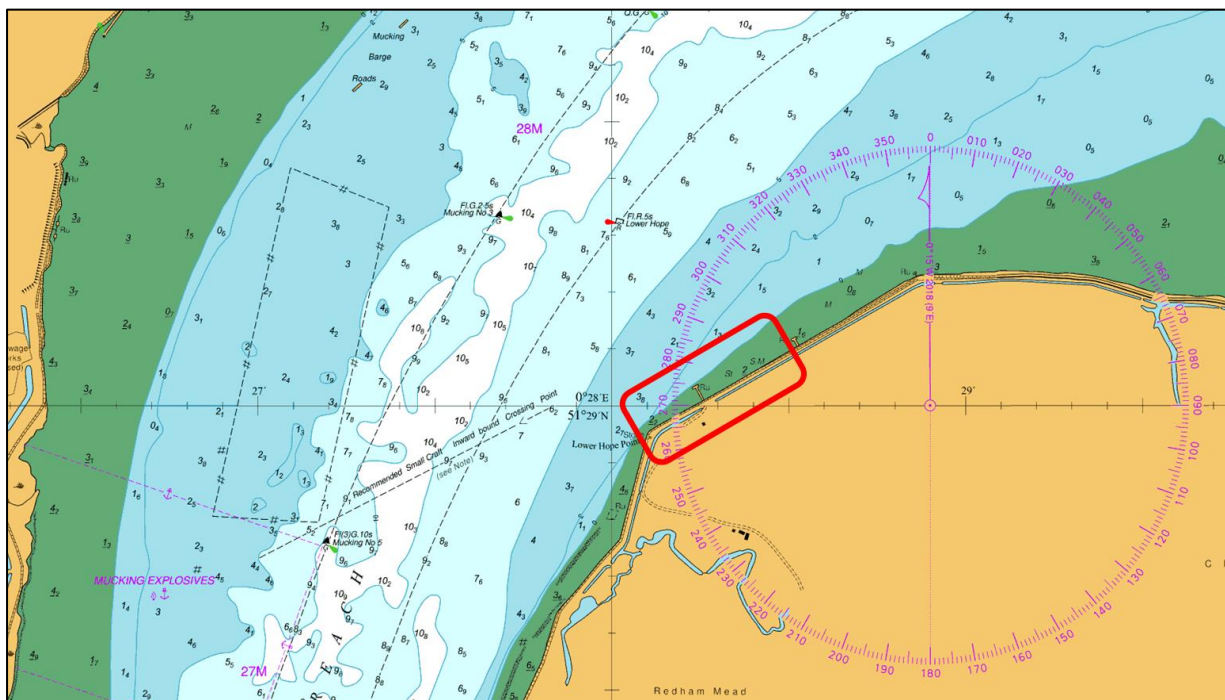


NOTICE TO MARINERS L34 of 2019

LOWER HOPE REACH LOWER HOPE POINT REINSTATEMENT OF THE REVETMENTS



Due to the severe erosion of the revetments at Lower Hope at Cliffe Marshes emergency repair works will commence on Monday 12th August 2019 and will continue for up to 4 months.

Works will involve the replacement of rip rap armour stone and additional cohesive material which will be brought to site by flat top barge with mounted excavator. During the works the crane barge "BOXER" will be held in position on spud legs and will act as a mooring station for the barges delivering material. Additional vessels will be involved in these works including various GPS Tugs for the movement of barges and the safety boat *DIVECO5*.

Temporary lights and markers will be positioned to aid the movement and positioning of barges.

At times during the works a 'Proceed with Caution' will be issued by London VTS on VHF Channel 69 in accordance with Permanent Notice to Mariners P4. All vessels involved in the works will maintain a listening watch on VHF Channel 68 and display the international code flags "ROMEO YANKEE" at all times when the "Proceed with Caution" is in place.

For the latest information contact London VTS on VHF Channel 68 or by telephone on 01474 560311.

12 August 2019

Port of London Authority
London River House, Royal Pier Road,
Gravesend, Kent DA12 2BG

BOB BAKER
CHIEF HARBOUR MASTER



EXPIRY DATE: 31st December 2019
TO RECEIVE FUTURE NOTICES TO MARINERS BY **E-MAIL**,
PLEASE REGISTER VIA OUR WEBSITE www.pla.co.uk
**Telephone calls, VHF radio traffic, CCTV and radar traffic images may
be recorded in the VTS Centres at Gravesend and Woolwich**
All Current Notices to Mariners can be found here -
<http://www.pla.co.uk/Safety/Regulations-and-Guidance/Notices-to-Mariners/Notices-to-Mariners>

