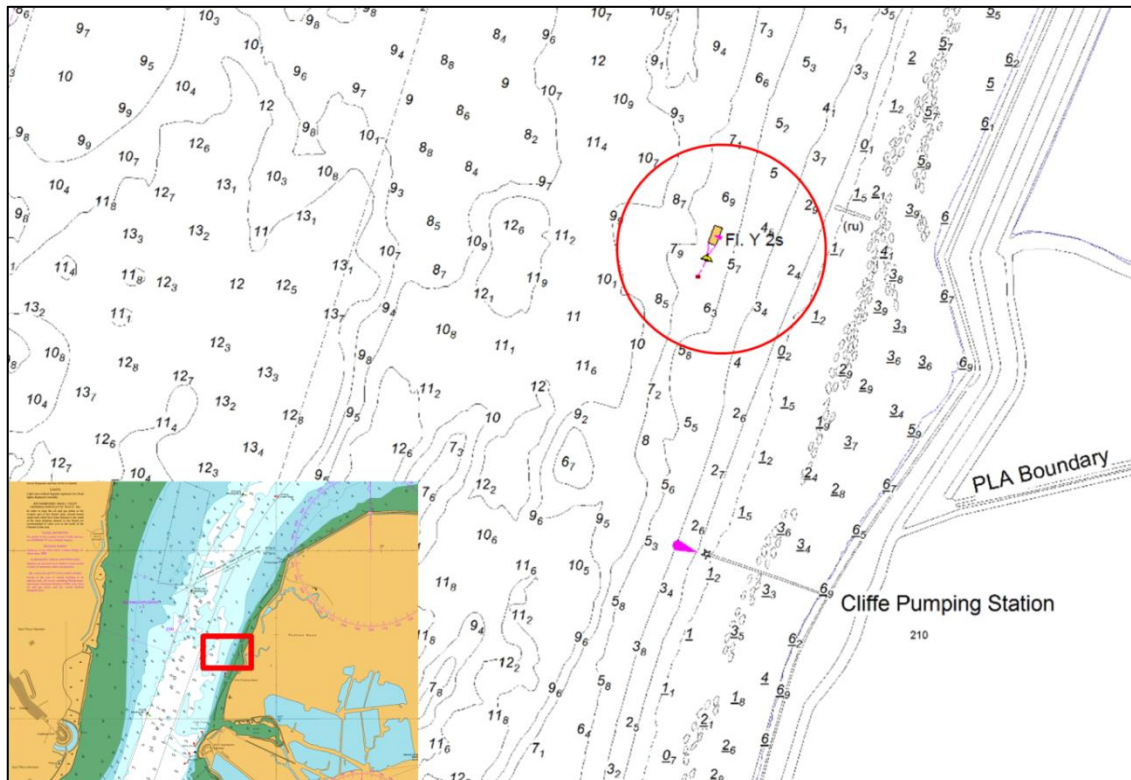


NOTICE TO MARINERS L35 of 2019

LOWER HOPE REACH PASSIVE DRIFTWOOD COLLECTOR DEPLOYMENT TRIAL



The deployment of a passive driftwood collector (PDC) will be trialled in Lower Hope Reach in a position due north of the Cliffe Pumping Station as shown above and will swing freely with the tide on its mooring.

The PDC will be moored, initially on a temporary basis, for an evaluation trial of approximately 6 months. If the trial is successful it may remain in this position on a permanent basis. Confirmation of this will be advised in a future Notice to Mariners.

The PDC will be marked with a flashing yellow light displaying the light characteristics FI.Y.2s.

For the latest information contact London VTS on VHF Channel 68 or by telephone on 01474 560311.

12 August 2019

Port of London Authority
London River House, Royal Pier Road,
Gravesend, Kent DA12 2BG

BOB BAKER
CHIEF HARBOUR MASTER



TO RECEIVE FUTURE NOTICES TO MARINERS BY **E-MAIL**,
PLEASE REGISTER VIA OUR WEBSITE www.pla.co.uk
**Telephone calls, VHF radio traffic, CCTV and radar traffic images may
be recorded in the VTS Centres at Gravesend and Woolwich**
All Current Notices to Mariners can be found here -
<http://www.pla.co.uk/Safety/Regulations-and-Guidance/Notices-to-Mariners/Notices-to-Mariners>

