

NOTICE TO MARINERS L36 of 2019

SOUTHEND DEEP WATER ANCHORAGES & LEIGH SMALL SHIP ANCHORAGE **CURRENT MONITORING EQUIPMENT**

During the week commencing 26th August 2019 current monitoring equipment will be deployed in the Leigh Small Ship Anchorage and in the vicinity of the Southend Deep Water Anchorages.

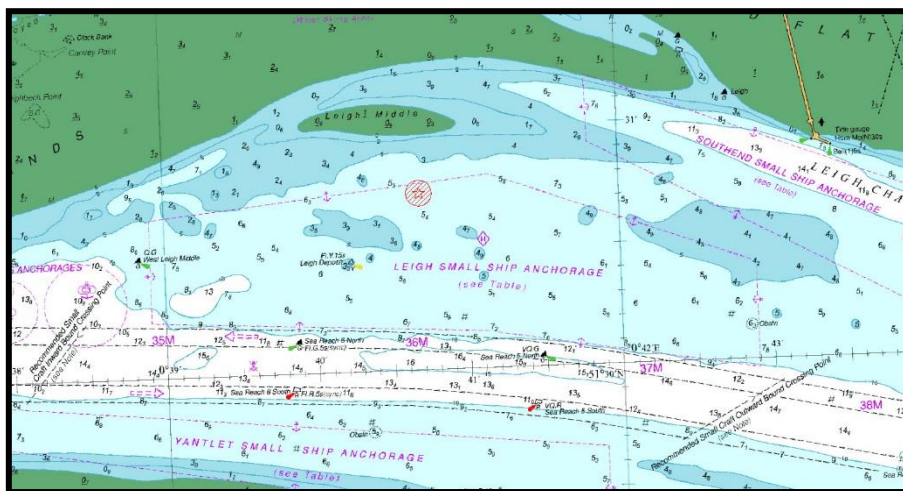


Figure 1 - 51°30.726'N 00°40.686'E at a depth of 6m

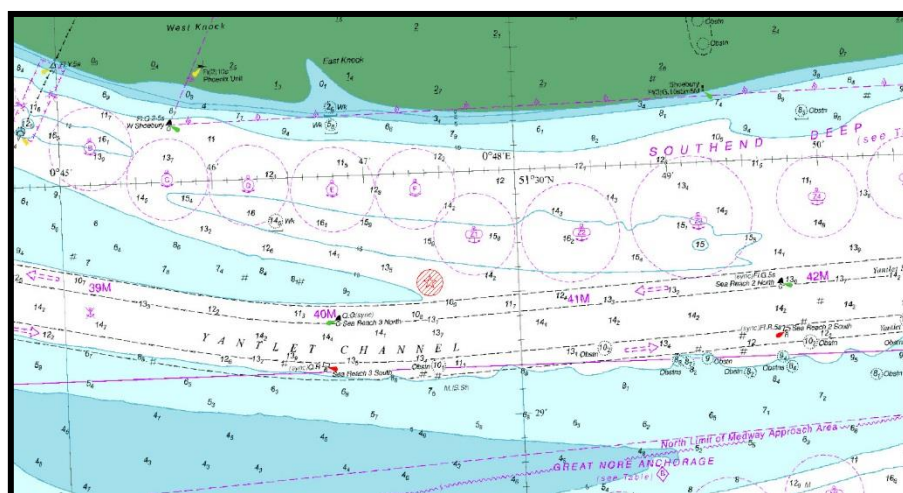


Figure 2 - 51°29.550'N 00°47.412'E at a depth of 12m

The current monitoring devices will be deployed in the positions shown in Figures 1 and 2 above for a period of 35 days.

Deployment and recovery will be carried out by the vessel PUNISHER which will be restricted in its ability manoeuvre. A 500m exclusion will be in place around the vessel whilst deployment and recovery operations are underway. Deployment of each monitoring device will take approximately 30 to 60 minutes.

Once in position there will be a 100m exclusion zone around each device, which will be passively monitored by London VTS.

The current monitoring equipment will stand up to one and a half metres above the river bed and will not be marked with surface markers.

For the latest information contact London VTS on VHF Channel 68 or by telephone on 01474 560311.

22 August 2019

Port of London Authority
London River House, Royal Pier Road,
Gravesend, Kent DA12 2BG

BOB BAKER
CHIEF HARBOUR MASTER



EXPIRY DATE: 30th September 2019
TO RECEIVE FUTURE NOTICES TO MARINERS BY **E-MAIL**,
PLEASE REGISTER VIA OUR WEBSITE www.pla.co.uk
**Telephone calls, VHF radio traffic, CCTV and radar traffic images may
be recorded in the VTS Centres at Gravesend and Woolwich**
All Current Notices to Mariners can be found here -
<http://www.pla.co.uk/Safety/Regulations-and-Guidance/Notices-to-Mariners/Notices-to-Mariners>

