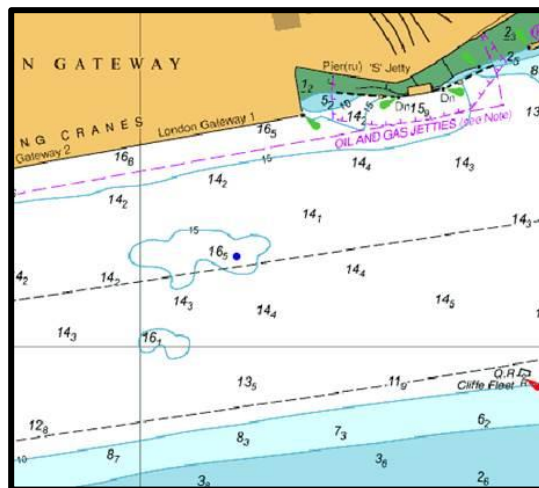


## NOTICE TO MARINERS L38 of 2019

### SEA REACH LONDON GATEWAY TIDE MONITORING EQUIPMENT

On 19<sup>th</sup> September 2019 the PLA Hydrographic Service will be deploying a bottom-mounted current monitoring device (an ADCP) mid channel off London Gateway.



The deployment will last about two to three weeks after which it will be removed.

The unit stands less than one metre above the bed and the sites have been selected so as to not interfere with any surface shipping, which will not be restricted during these deployments. There will be no surface markers.

Deployment and recovery will be made over LW slack periods by a PLA Hydrographic Survey vessel in liaison with London VTS monitoring VHF Channel 68 throughout the initial deployment.

For the latest information contact London VTS on VHF Channel 68 or by telephone on 01474 560311.

**9 September  
2019**

Port of London Authority  
London River House, Royal Pier Road,  
Gravesend, Kent DA12 2BG

**BOB BAKER  
CHIEF HARBOUR MASTER**



TO RECEIVE FUTURE NOTICES TO MARINERS BY **E-MAIL**,  
PLEASE REGISTER VIA OUR WEBSITE [www.pla.co.uk](http://www.pla.co.uk)  
Telephone calls, VHF radio traffic, CCTV and radar traffic images may  
be recorded in the VTS Centres at Gravesend and Woolwich

