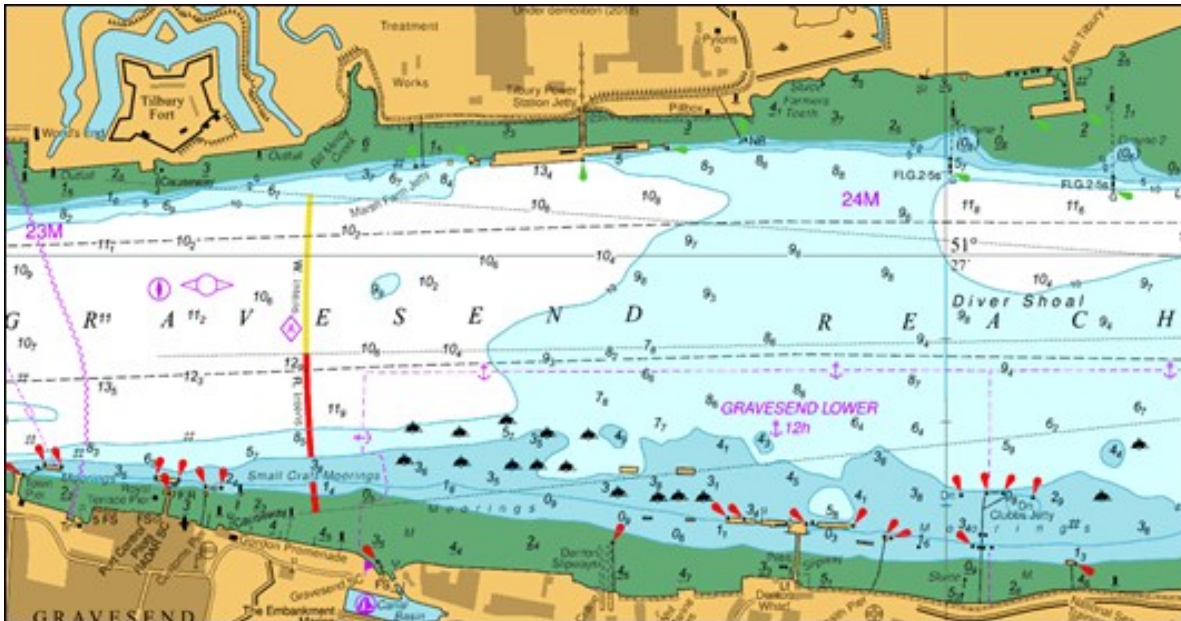


NOTICE TO MARINERS
GRAVESEND REACH

DREDGING OPERATIONS

On or around 24th November 2023 the vessel JENNY D will commence plough dredging operations at Tilbury 2 CMAT, Gravesend Reach. Dredging will take place on the ebb tide only, with expected completion around 8th December 2023.



The vessel is required to display lights and signals as per the International Regulations for Preventing Collisions at Sea and maintain a listening watch on VHF channel 68.

Further details will be broadcast by London VTS on VHF Channel 68.

20/11/2023

Port of London Authority
London River House, Royal Pier Road,
Gravesend, Kent DA12 2BG

LYN KINDLEN-FUNNEL
Harbour Master

EXPIRY DATE: 15/12/2023

TO RECEIVE FUTURE NOTICES TO MARINERS BY E-MAIL,
PLEASE REGISTER VIA OUR WEBSITE pla.co.uk/Subscription-to-Newsletter

Telephone calls, VHF radio traffic, CCTV and radar traffic images may be recorded in the
VTS Centres at Gravesend and Woolwich

