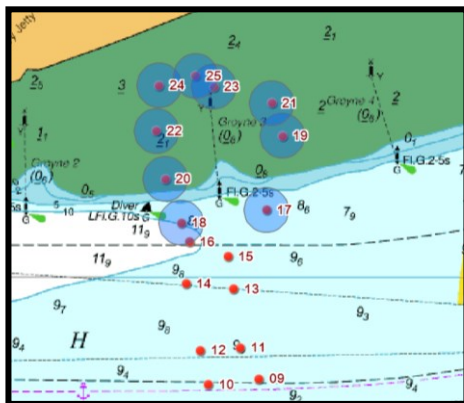


NOTICE TO MARINERS L54 of 2019

GRAVESEND REACH LOWER THAMES CROSSING TEMPORARY CONTROL ZONE & GROUND INVESTIGATION WORKS

This Notice supersedes Notice to Mariners L45



Following completion of marine ground investigation works within the main navigation channel and within Higham Bight the temporary control zone has now been **cancelled**. Investigation works will continue on the north side of the river within the area shown below around Groyne No. 3 and continue until January 2020.

A 50m exclusion zone will remain around each jack-up barge during the remaining works. Movements will be co-ordinated with London VTS on VHF Channel 68 around the slack water periods as required. Vessels must not enter the exclusion zones other than in an emergency or with the prior permission of London VTS.

Works will be suspended for approximately two weeks over the Christmas and New Year period with all jack-up barges being removed from the river to Denton Wharf during this time.

Craft involved in the works

The following craft will be involved in the works with additional craft present at times:

SKATE 3E | Jack-up barge | 19.5m x 12.2m

ARAN 120 | Jack-up Barge | 18.6m x 18.3m

Ribs will be used for crew transfers.

The tugs SEADOG, GUNDOG and CHILLIDOG will be on standby throughout the works and will be used to position the jack-up barges.

All vessels involved in the works will maintain a listening watch on VHF Channel 68.

Both jack-up barges will be fitted with AIS and will display the lights and shapes as prescribed in Rule 27 of the International Regulations for Preventing Collisions at Sea 1972 namely:

- By day, three black shapes in a vertical line the highest and lowest of which are balls and the middle one a diamond.
- By night, three all round lights in a vertical line the highest and lowest of which are red and the middle one white.

**13th December
2019**

Port of London Authority
London River House, Royal Pier Road,
Gravesend, Kent DA12 2BG

**BOB BAKER
CHIEF HARBOUR MASTER**



TO RECEIVE FUTURE NOTICES TO MARINERS BY **E-MAIL**,
PLEASE REGISTER VIA OUR WEBSITE www.pla.co.uk
Telephone calls, VHF radio traffic, CCTV and radar traffic images may
be recorded in the VTS Centres at Gravesend and Woolwich
All Current Notices to Mariners can be found here -
<http://www.pla.co.uk/Safety/Regulations-and-Guidance/Notices-to-Mariners/Notices-to-Mariners>

