

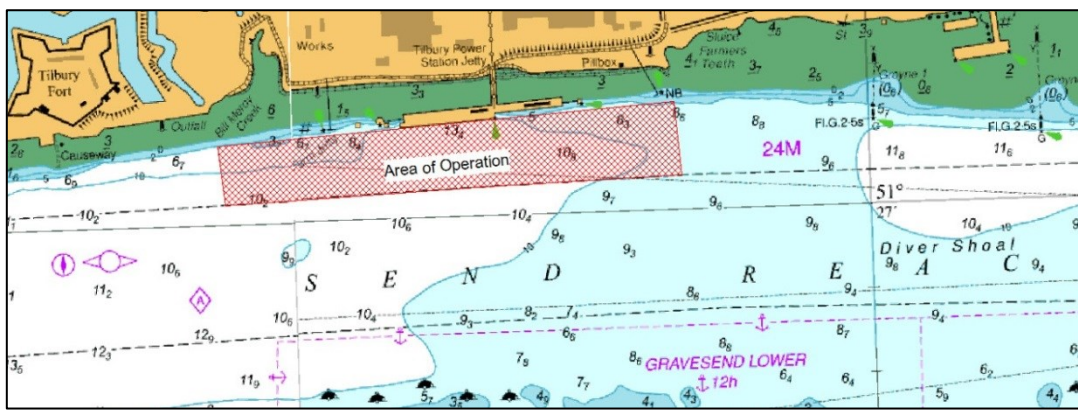
## **NOTICE TO MARINERS L55 of 2019**

### GRAVESEND REACH

### TILBURY2

### MARINE WORKS

This notice supersedes L44 of 2019



Work continues on the development of two new RoRo berths and a CMAT berth on the former Tilbury Power Station Jetty site.

Marine Plant involved in these operations includes the 75m flat top barge NEPTUNE equipped with a 320T crawler crane and two transfer & storage barges. All barge movements will be carried out by either the multi-cat vessel SEADOG or SHAKEDOG, with the safety boat EOL1 in attendance.

At times during the construction works the jetty lights will not be displayed as per published nautical charts. The eastern and western limits of the works will be marked by green aids to navigation at all times. Isolated structures will be marked individually. Charts will be updated on completion of the works.

Throughout the works periods there will be requirements for vessels to 'Proceed with Caution' with this being broadcast by London VTS on VHF Channel 68 in conjunction with marine craft displaying International Code flags "Romeo Yankee". All vessels involved with the works will maintain a continuous listening watch on VHF Channel 68.

For the latest information contact London VTS on VHF Channel 68 or by telephone on 01474 560311.

**13<sup>th</sup> December  
2019**

Port of London Authority  
London River House, Royal Pier Road,  
Gravesend, Kent DA12 2BG

**BOB BAKER  
CHIEF HARBOUR MASTER**



TO RECEIVE FUTURE NOTICES TO MARINERS BY **E-MAIL**,  
PLEASE REGISTER VIA OUR WEBSITE [www.pla.co.uk](http://www.pla.co.uk)  
**Telephone calls, VHF radio traffic, CCTV and radar traffic images may  
be recorded in the VTS Centres at Gravesend and Woolwich**  
All Current Notices to Mariners can be found here -  
<http://www.pla.co.uk/Safety/Regulations-and-Guidance/Notices-to-Mariners/Notices-to-Mariners>

