

## NOTICE TO MARINERS      L9 of 2020

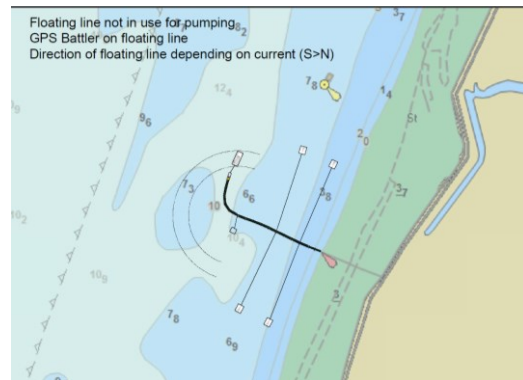
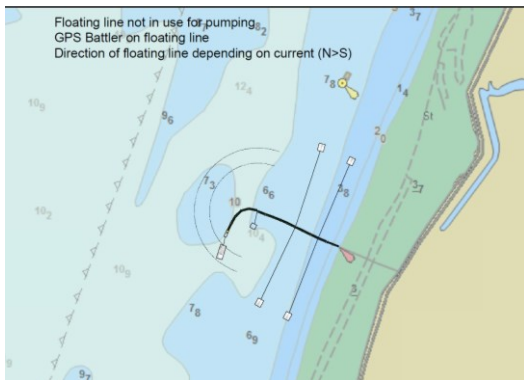
### LOWER HOPE REACH CLIFFE PUMPING STATION FLOATING PIPELINE

On or about the 13<sup>th</sup> March 2020 a 184-metre floating pipe line will be installed at Cliffe Pumping Station in Lower Hope Reach to take dredged material from the forthcoming dredging campaign at Thames Oil Port undertaken by the Trailer Suction Head Dredger STRANDWAY.

The pipeline will be delivered to the site by the tug BALOE and assisted by the GPS BATTLER from the Medway Buoy inwards. The tug and tow will display lights and shapes in accordance with International Regulations for Preventing Collisions at Sea 1972 (as amended) rule 27b.

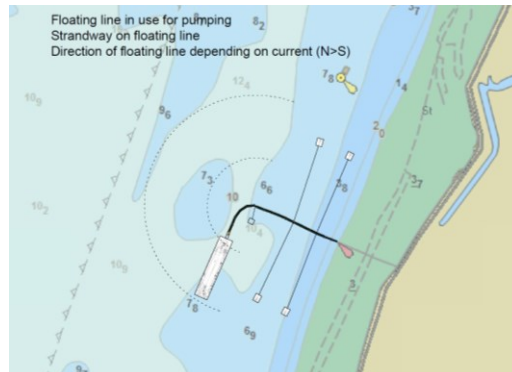
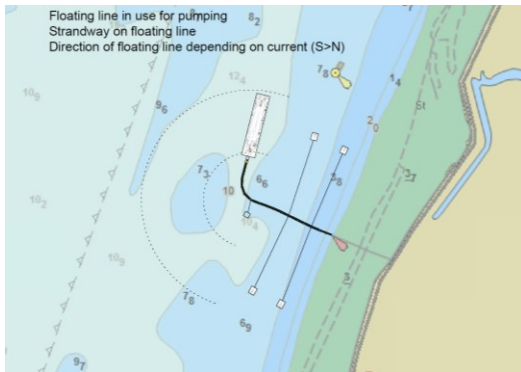
The pipeline will be lit by number of fixed white lights and guarded by the multicat GPS BATTLER throughout the operation maintaining a listening watch on VHF Channel 68 throughout.

The pipeline will be anchored to the riverbed with the tail end laying with the tide as shown below. Each anchors will be fitted with a retrieval line and two buoys.





During the dredging campaign at Thames Oil Works, which is expected to start during the week commencing 16<sup>th</sup> March 2020, the TSHD STRANDWAY will discharge dredged material via the floating pipeline. During discharge the TSHD STRANDWAY will position itself against the current as close to parallel with the navigation channel as shown below.



A PLA pilot will be onboard throughout and maintaining a listening watch on VHF Channel 68.

For the latest information contact London VTS either by telephone 01474 560311 or by VHF either channel 68 as appropriate.

**10 March 2020**

Port of London Authority  
London River House, Royal Pier Road,  
Gravesend, Kent DA12 2BG

**Cathryn Spain - Harbour  
Master (Lower)**



TO RECEIVE FUTURE NOTICES TO MARINERS BY **E-MAIL**,  
PLEASE REGISTER VIA OUR WEBSITE [www.pla.co.uk](http://www.pla.co.uk)  
**Telephone calls, VHF radio traffic, CCTV and radar traffic images may  
be recorded in the VTS Centres at Gravesend and Woolwich**  
All Current Notices to Mariners can be found here -  
<http://www.pla.co.uk/Safety/Regulations-and-Guidance/Notices-to-Mariners/Notices-to-Mariners>

