

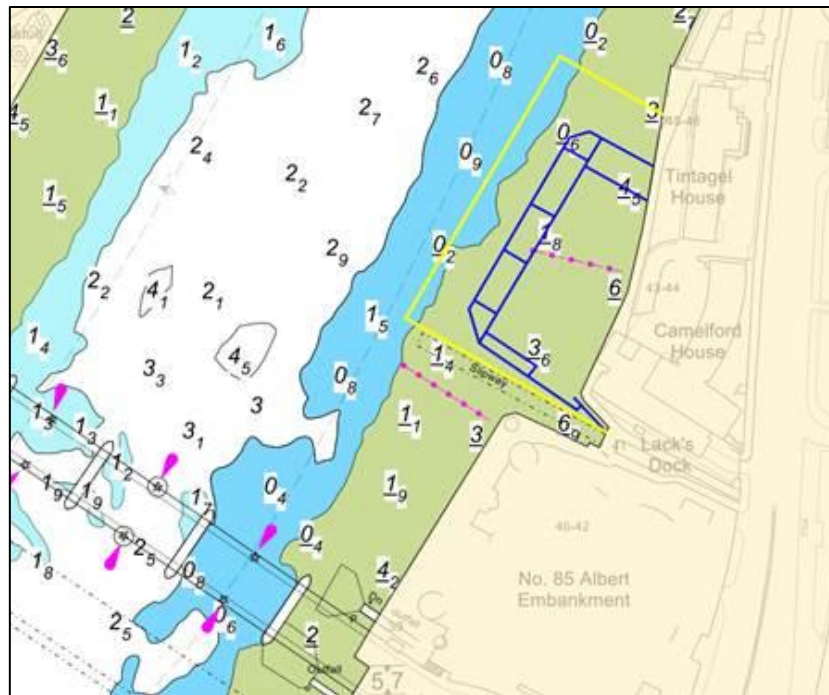
## NOTICE TO MARINERS      M114 of 2017

### NINE ELMS REACH

# ALBERT EMBANKMENT COFFERDAM CONSTRUCTION WORKS

Mariners are advised that on or about 8 January 2018, contractors working on the Tideway Tunnel Project will commence works which will involve constructing a twin cofferdam wall on the Albert Embankment north east of Lacks Dock.

Please see the chartlet below depicting the location of the construction works and the cofferdam as completed.



No vessels other than those engaged in the works shall enter the navigation exclusion zone depicted by the yellow line on the chartlet.

The works which will include dredging, diving, sheet piling and back filling operations will take place using a variety of barges including crane barges, jack up barges, supply barges, tugs and Multicat vessels and are expected to take approximately 7 months.

The vessels involved will maintain a continuous listening watch on VHF channel 14. At times RY flags will be exhibited in conjunction with "proceed with caution / slow down requests" in VTS broadcasts.

Vessels are requested to be mindful of the nature of the works, be aware of vessels proceeding to and from the works, their wash when passing the works, and to pass at a safe distance particularly from any yellow pellet buoys which may be marking anchors, sinkers or other under water obstructions.

Further details will be broadcast by London VTS on VHF Channel 14.

---

**20 December  
2017**

Port of London Authority  
London River House, Royal Pier Road,  
Gravesend, Kent DA12 2BG

**BOB BAKER  
CHIEF HARBOUR MASTER**



**EXPIRY DATE: 31<sup>st</sup> August 2018**  
TO RECEIVE FUTURE NOTICES TO MARINERS BY **E-MAIL**,  
PLEASE REGISTER VIA OUR WEBSITE [www.pla.co.uk](http://www.pla.co.uk)  
**Telephone calls, VHF radio traffic, CCTV and radar traffic images may  
be recorded in the VTS Centres at Gravesend and Woolwich**

