

NOTICE TO MARINERS M1 of 2022

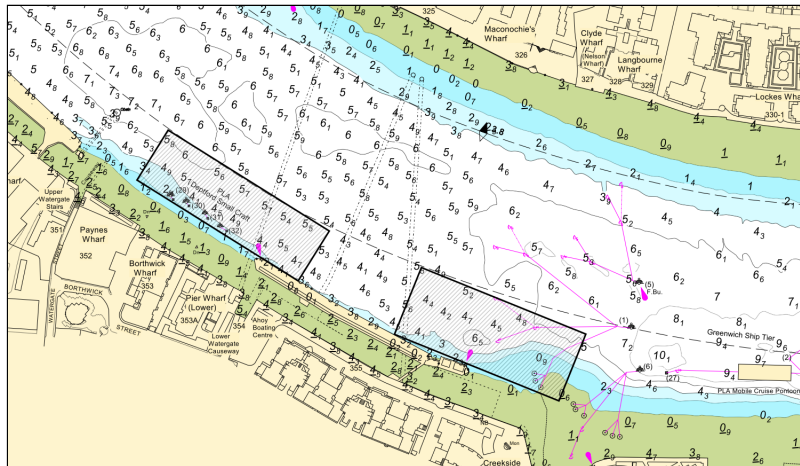
GREENWICH REACH TO LOWER POOL

FILMING OPERATIONS

Filming operations will take place in Greenwich Reach in the vicinity of the disused Deptford Power Station Jetty between Sunday 16th January 2022 and Thursday 20th January 2022 between the hours of 17:00 and 03:00 daily.

To support filming operations SCHELDEMOND II will be spudded off the AHOY Centre, Tug FELIX will tow a flat top pontoon and will hold position upriver of Greenwich Ship Tier, within the two hatched areas on the chart extract below. Lighting equipment will be positioned aboard the SCHELDEMOND II and the flat top pontoon, with lighting equipment angled towards the shore.

Vessels involved in the filming operations will not impeded safe passage for vessels operating to or from Deptford Creek.



Greenwich Reach – Greenwich Power Station Jetty

Filming operations will also take place in Greenwich Reach in the vicinity of the disused Greenwich Power Station Jetty on Thursday 20th January 2022 from 17:00 until Friday 21st January 2022 at 03:00. This will involve Tug FELIX towing a flat top pontoon, holding position off the jetty with lighting equipment also angled towards the shore.

Lower Pool – King Henry’s Wharf

Additional filming operations will be taking place in the Lower Pool by King Henry’s Wharf between Sunday 23rd January 2022 and Thursday 27th January 2022 between the hours of 17:00 and 03:00 daily.

To support the filming operations at King Henry's Wharf two barges with lighting equipment will be moored on Wapping Pier and on Lower Gun Wharf Barge Mooring. Lighting equipment will be angled towards the shore. Additional vessels will also be involved in filming operations at this site, including; motor vessel ALISON, camera vessel SCHELDEMOND II and three safety launches; ECHO LIMA, LIMA LIMA 1 and BRAVO LIMA.

Requirements to proceed with caution or at slow speed will be made in accordance with the procedure set out in the Port of London Authority's Port Information Guide, under 'London VTS', 'Section 4'. Vessels navigating within past these operations, are to maintain a continuous watch on VHF Channel 14. Further details will be broadcast by London VTS on VHF Channel 14.

10th January 2022

Port of London Authority
London River House, Royal Pier Road,
Gravesend, Kent DA12 2BG

**DARREN JA KNIGHT
DEPUTY HARBOUR MASTER**

EXPIRY DATE: 31st January 2022

TO RECEIVE FUTURE NOTICES TO MARINERS BY **EMAIL** PLEASE REGISTER VIA OUR WEBSITE www.pla.co.uk
Telephone calls, VHF radio traffic, CCTV and radar traffic images may be recorded in the VTS Centres at Gravesend and Woolwich.
All current Notices to Mariners can be found here - www.pla.co.uk/ntm